

AIRBUS
CUSTOMER SERVICES DIRECTORATE
1 Rond Point Maurice Bellonte
31707 BLAGNAC CEDEX
FRANCE
Tel : (33) 5 61 93 33 33
Telex : AIRBU 530526F
Fax : (33) 5 61 93 42 51

MANDATORY MANDATORY MANDATORY

ATA SYSTEM: 34

TITLE: NAVIGATION - GENERAL - INSTALL GOODRICH PITOT PROBES PN 0851HL.

MODIFICATION No.: 25578P4366 150799P11779 151182P18009

This page transmits Revision No.30 of Service Bulletin No.A320-34-1170

ADDITIONAL WORK

****CONF ALL**

No additional work is required by this revision for aircraft modified by any previous issue.

REASON

Revision No. 30 issued to:

- add MOD No. 150799P11779 and MOD No. 151182P18009,
- extend the effectivity,
- add appendix 02 - retrofitted modifications,
- and create a new configuration.

CHANGES

The main changes of this revision are:

- MOD No. 150799P11779 and MOD No. 151182P18009 added,
- effectivity extended and configuration definition paragraph updated,
- publications affected updated,
- commercial policy changed,
- appendix 02 and illustration A-FABAA added,
- general evaluation table updated,

5 DATE: Dec 18/98

SERVICE BULLETIN No.: A320-34-1170

REVISION No.: 30 - Jun 18/15

Page: 1

A318/A319/A320/A321

SERVICE BULLETIN REVISION TRANSMITTAL SHEET

- configuration 003 created to include Aircraft with MOD No. 155737P14215 embodied,
- material information paragraph updated,
- standard practices paragraph added,
- and minor changes applied.

FRONT MATTER		
NAVIGATION - GENERAL - INSTALL GOODRICH PITOT PROBES PN 0851HL.	CONFIGURATION UPDATED	R
MODIFICATIONS	MODIFICATION NUMBER(S) UPDATED	R
SUMMARY		
MODIFICATIONS	MODIFICATION CLASSIFICATION UPDATED	R
REASON/DESCRIPTION/OPERATIONAL CONSEQUENCES	REASON UPDATED	R
GENERAL EVALUATION	GENERAL EVALUATION TABLE UPDATED	R
MATERIAL PRICE INFORMATION	MATERIAL PRICE INFORMATION TABLE ADDED	N
EFFECTIVITY	OPERATOR LIST UPDATED	R
CONCURRENT REQUIREMENTS	CONCURRENT REQUIREMENTS UPDATED CONFIGURATION UPDATED	R
	CONCURRENT REQUIREMENTS ADDED	N
REFERENCES / REPERCUSSIONS	REFERENCES/REPERCUSSIONS TABLE UPDATED	R
MANPOWER	MANPOWER ADDED	N
APPENDICES	APPENDICES UPDATED	R
Fig. A-FSAAA		
Fig. A-FSAAA Sheet 01	SHEET UPDATED	R
PLANNING INFORMATION		
EFFECTIVITY	EFFECTIVITY RELATED INFORMATION UPDATED	R
Configuration definition	CONFIGURATION LIST UPDATED	R
CONF 001	CONFIGURATION DEFINITION UPDATED CONFIGURATION DESCRIPTION UPDATED	R
CONF 002	CONFIGURATION DEFINITION UPDATED CONFIGURATION DESCRIPTION UPDATED	R
CONF 003	CONFIGURATION ADDED	N
Material Effectivity	MATERIAL EFFECTIVITY UPDATED CONFIGURATION UPDATED	R
CONCURRENT REQUIREMENTS	CONCURRENT SB LIST UPDATED CONFIGURATION UPDATED	R
	CONCURRENT SB LIST ADDED	N
REASON		
History	HISTORY UPDATED	R
DESCRIPTION	DESCRIPTION UPDATED	R
MANPOWER	MANPOWER UPDATED	R
	MANPOWER UPDATED	R
	MANPOWER ADDED	N

A318/A319/A320/A321

SERVICE BULLETIN REVISION TRANSMITTAL SHEET

REFERENCES	REFERENCED DOCUMENTATION UPDATED	R
	REFERENCED DOCUMENTATION UPDATED	R
	REFERENCED DOCUMENTATION ADDED	N
PUBLICATION AFFECTED	PUBLICATIONS AFFECTED UPDATED	R
INTERCHANGEABILITY/MIXABILITY	INTERCHANGEABILITY/MIXABILITY UPDATED	R
	INTERCHANGEABILITY/MIXABILITY ADDED	N
MATERIAL INFORMATION		
MATERIAL - PRICE AND AVAILABILITY		
Price and Availability	PRICE AND AVAILABILITY UPDATED MATERIAL SET UPDATED	R
INDUSTRY SUPPORT INFORMATION	INDUSTRY SUPPORT INFORMATION UPDATED	R
LIST OF MATERIALS - OPERATOR SUPPLIED		
Components	COMPONENTS UPDATED	R
ACCOMPLISHMENT INSTRUCTIONS		
TASK 341170- 831-801-001-Modification	TASK SOLUTION UPDATED CAUTION UPDATED	R
Task associated data - 003	TASK ASSOCIATED DATA ADDED	N
Subtask 341170-910-002-001	SUBTASK SOLUTION ADDED	N
Subtask 341170-910-002-001	SUBTASK SOLUTION ADDED	N
Subtask 341170-910-002-001	SUBTASK SOLUTION ADDED	N
Subtask 341170-839-001-001	SUBTASK SOLUTION ADDED	N
Subtask 341170-941-001-001	SUBTASK SOLUTION UPDATED FIN UPDATED NOTE UPDATED	R
Subtask 341170-941-001-001	SUBTASK SOLUTION UPDATED FIN UPDATED NOTE UPDATED	R
Subtask 341170-941-001-001	SUBTASK SOLUTION ADDED	N
Subtask 341170-831-001-001	SUBTASK SOLUTION UPDATED PART NUMBER DESCRIPTION UPDATED	R
Subtask 341170-831-001-002	SUBTASK SOLUTION UPDATED PART NUMBER DESCRIPTION UPDATED	R
Subtask 341170-831-001-002	SUBTASK SOLUTION ADDED	N
Subtask 341170-730-001-001	SUBTASK SOLUTION UPDATED FIN UPDATED	R
Subtask 341170-730-001-001	SUBTASK SOLUTION UPDATED FIN UPDATED	R
Subtask 341170-730-001-001	SUBTASK SOLUTION ADDED	N
Subtask 341170-942-001-001	SUBTASK SOLUTION UPDATED REFERENCED DOCUMENTATION UPDATED FIN UPDATED	R
Subtask 341170-942-001-001	SUBTASK SOLUTION UPDATED REFERENCED DOCUMENTATION UPDATED FIN UPDATED	R
Subtask 341170-942-001-001	SUBTASK SOLUTION ADDED	N
Appendix 01 - Elapsed Time Assumption		
APPENDIX CONTENT	APPENDIX CONTENT UPDATED	R

SERVICE BULLETIN REVISION TRANSMITTAL SHEET

Fig. A-FAAAA	FIGURE SOLUTION UPDATED	R
Appendix 02 - Retrofitted Modifications		
APPENDIX CONTENT	APPENDIX CONTENT ADDED	N
Fig. A-FABAA	FIGURE SOLUTION ADDED	N
Fig. A-FABAA Sheet 01	SHEET ADDED	N

FILLING INSTRUCTIONS

This Service Bulletin has been generated electronically and is reissued as a complete document. Replace the complete document.

Put this Revision Transmittal Sheet in front of the Service Bulletin.

HISTORY OF PREVIOUS REVISIONS

Revision No. 01 issued to add operator ANA.

Revision No. 02 issued to add operator RJA.

Revision No. 03 issued to add operator MON, aircraft MSN 0633.

Revision No. 04 issued to add operator SWR, aircraft MSN 0517, 0519, 0520, 0522, 0533, 0535, 0541, 0545, 0548, 0553, 0559, 0562, 0566, 0574, 0577, 0578, 0585, 0588, 0596, 0603, 0612, 0621, 0629, 0635, 0642, 0643, 0664, 0673, 0681, 0701, 0703, 0713, 0727, 0734, 0782, 0827, 0870, 0891, 0987, 1018 and 1144.

Revision No. 05 issued to add operator AUA, aircraft MSN 0552, 0570, 0581, 0768, 0776, 0797, 0920, 0935, 1137, 1150 and 1189 added.

Revision No. 06 issued to add operator GFA, aircraft MSN 0313, 0325, 0345, 0375, 0419, 0421, 0438, 0445, 0459, 0466, 0497 and 0537 and aircraft MSN 0087, 0088 and 0569 for operator RJA.

Revision No. 07 issued to add operator ALK, aircraft MSN 0406.

Revision No. 08 issued to add aircraft MSN 1184 and 1364 for operator F2I.

Revision No. 09 issued to add operator AWE and aircraft MSN 0304 for operator ALK.

Revision No. 10 issued to add aircraft MSN 2165 for operator AZI and aircraft MSN 2175 for operator AIB.

Revision No. 11 issued to add aircraft MSN 2200, 2203 and 2232 for operator CBF and to remove MSN 2165 for operator AZI and MSN 2175 for operator AIB.

Revision No. 12 issued to add aircraft MSN for operator CSN.

Revision No. 13 issued to add aircraft MSN 2316 and 2356 for operator 98Y.

Revision No. 14 issued to add aircraft MSN 0994 for operator IBE.

Revision No. 15 issued to add MSN for operators TAI.

A318/A319/A320/A321

SERVICE BULLETIN REVISION TRANSMITTAL SHEET

Revision No. 16 issued to add aircraft for operator AMU.

Revision No. 17 issued to add aircraft MSN 2169, 2185 and 2197 for operator JST.

Revision No. 18 issued to add aircraft MSNs 0293 and 2707 for operator BIE and add MSNs 0646 , 0654 , 0794 , 1016 and 1172 for operator DLH.

Revision No. 19 issued to add aircraft MSN 1304 , 1332 , 1351 , 1491 , 1512 , 1548 , 1854 , 1858 , 1877 and 1903 for operator LAN.

Revision No. 20 issued to add aircraft MSN 2156 and 2164 for operator JSA and aircraft MSN 1408 and 3717 for operator JST.

Revision No. 21 issued to add aircraft MSN 0990 for operator PIC and aircraft MSN 1355 , 1526 , 1568 , 1626 , 2089 , 2096 , 2295 , 2304 and 2321 for operator LAN.

Revision No. 22 issued to extend the effectivity and to delete the Service Bulletin No. A320-34-1354 from the concurrent requirements paragraph.

Revision No. 23 issued to add aircraft MSN 4732 for operator LJB, 4768 for operator 69T, 4795 for operator MJN, 4842 for operator 97U and 4878 for operator 60X.

Revision No. 24 issued to add aircraft MSN 0219 for operator 69X and aircraft MSN 5024 , 5030 for operator HDA.

Revision No. 25 issued to add aircraft MSN 4650 for operator 60X and aircraft MSN 4992 for operator ORF.

Revision No. 26 issued to add aircraft MSN 0644 , 1102 , 1160 , 1336 , 1388 , 2392 , 2400 , 2810 , 3255 , 3790 and 4275 for operator BEL.

Revision No. 27 issued to add aircraft MSN 3369 and 3669 for operator HDA, and to remove aircraft MSN 0170 , 0245 , 0710 , 1676.

Revision No. 28 issued to add 55 aircraft MSN for operator AFL , 2 aircraft MSN for operator DNV , 2 aircraft MSN for operator SDM and 3 aircraft MSN for operator SHU.

Revision No. 29 issued to add all Aircraft of A320 family fitted with Thales Pitot Probes.

REVISION SEQUENCE

ORIGINAL: Dec 18/98

REVISION No.: 02 - Dec 07/99

REVISION No.: 03 - Feb 17/00

REVISION No.: 04 - May 24/00

REVISION No.: 05 - Sep 11/00

REVISION No.: 06 - Oct 18/01

REVISION No.: 07 - Dec 04/01

5 DATE: Dec 18/98

SERVICE BULLETIN No.: A320-34-1170

REVISION No.: 30 - Jun 18/15

Page: 5

A318/A319/A320/A321

SERVICE BULLETIN REVISION TRANSMITTAL SHEET

REVISION No.: 08 - Jan 15/03
REVISION No.: 09 - Feb 17/03
REVISION No.: 10 - Nov 21/03
REVISION No.: 11 - Aug 18/04
REVISION No.: 12 - Dec 02/04
REVISION No.: 13 - Jan 18/05
REVISION No.: 14 - Apr 21/05
REVISION No.: 15 - Jul 19/05
REVISION No.: 16 - Nov 23/06
REVISION No.: 17 - Feb 14/07
REVISION No. : 18 - Oct 09/09
REVISION No. : 19 - Nov 09/09
REVISION No. : 20 - Dec 01/10
REVISION No. : 21 - Mar 24/11
REVISION No. : 22 - Jul 19/11
REVISION No. : 23 - Feb 03/12
REVISION No. : 24 - Apr 12/12
REVISION No. : 25 - Sep 04/12
REVISION No. : 26 - Sep 16/13
REVISION No. : 27 - Mar 18/14
REVISION No. : 28 - Sep 01/14
REVISION No. : 29 - Feb 16/15
REVISION No. : 30 - Jun 18/15

5 DATE: Dec 18/98

SERVICE BULLETIN No.: A320-34-1170

REVISION No.: 30 - Jun 18/15

Page: 6

SERVICE BULLETIN SUMMARY

AIRBUS
CUSTOMER SERVICES DIRECTORATE
1 Rond Point Maurice Bellonte
31707 BLAGNAC CEDEX
FRANCE
Tel : (33) 5 61 93 33 33
Telex : AIRBU 530526F
Fax : (33) 5 61 93 42 51

This summary is for information only and is not approved for modification of the aircraft.

MANDATORY MANDATORY MANDATORY

ATA SYSTEM: 34

TITLE: NAVIGATION - GENERAL - INSTALL GOODRICH PITOT PROBES PN 0851HL.

****CONF ALL**

MODIFICATIONS

MODIFICATION CLASSIFICATION				
MAJOR	None			
MINOR	25578P4366	150799P11779	151182P18009	

NOTE: As per EASA IR 21, a minor change is one that has no appreciable effect on the mass, balance, structural strength, reliability, operational characteristics affecting the airworthiness of the product. All other changes are major changes.

REASON/DESCRIPTION/OPERATIONAL CONSEQUENCES

As described in Airworthiness Directive No. 2014-0237, the European Safety Agency (EASA) requires the removal of all THALES Pitot probes PN C16195AA or PN C16195BA from A320 family aircraft as a precautionary measure.

This Service Bulletin replaces the existing Pitot probes by UTAS Pitot probe PN 0851HL.

Application of this Service Bulletin will provide compliance to EASA Airworthiness Directive No. 2014-0237.

GENERAL EVALUATION

EVALUATION TABLE			
COMPLIANCE	MANDATORY (1)	CANCELS INSPECTION SB	NO
POTENTIAL AD	YES	A/C OPERATION AFFECTED	NO
RELIABILITY AFFECTED	NO	PAX COMFORT AFFECTED	NO
COST SAVING	NO	ETOPS AFFECTED	NO
STRUCTURAL LIFE EXTN	NO	VENDOR SB INVOLVED	NO
VALIDATION ON AIRCRAFT	YES	BOOKLET AVAILABLE	YES

NOTE (1): Service Bulletin must be accomplished.

5 DATE: Dec 18/98

SERVICE BULLETIN No.: A320-34-1170

REVISION No.: 30 - Jun 18/15

Page: 1

A318/A319/A320/A321

SERVICE BULLETIN SUMMARY

NOTE: This Service Bulletin has been validated at revision No. 03 on A320 aircraft with Manufacturer Serial Number (MSN) 0663.

NOTE: A booklet including photographs taken during the validation of this Service Bulletin is available on AIRBUS|World - Maintenance and Engineering - AirN@v engineering (in the concerned SB file).

MATERIAL PRICE INFORMATION

****CONF 001**

MATERIAL PRICE INFORMATION TABLE			
MATERIAL SET	QTY PER A/C	PRICE PER A/C (USD)	MAIN PARTS
Equipment BFEA01	1	See SB	Pitot probe

****CONF 002**

MATERIAL PRICE INFORMATION TABLE			
MATERIAL SET	QTY PER A/C	PRICE PER A/C (USD)	MAIN PARTS
Equipment BFEA02	1	See SB	Pitot probe

****CONF 003**

MATERIAL PRICE INFORMATION TABLE			
MATERIAL SET	QTY PER A/C	PRICE PER A/C (USD)	MAIN PARTS
Equipment BFEA02	1	See SB	Pitot probe

EFFECTIVITY

****CONF ALL**

This Service Bulletin is applicable to this (these) operator(s) :

A318/A319/A320/A321

SERVICE BULLETIN SUMMARY

03Q	03X	11S	15S	15T	16T	17R	17S	20Q	26S	27V	29S	31P
31V	32Q	35T	35U	36R	38W	41S	43S	47P	48P	52T	53Z	54S
59Z	61W	62X	66P	69X	73W	74T	76W	79W	80X	85T	85U	86P
86Z	87Q	89T	90Q	91X	94W	95V	95W	98W	AAF	AAR	AAW	AAV
ABL	ABQ	ABY	ACA	ADR	AEE	AFL	AGY	AHY	AIB	AIC	AIJ	ALK
AMC	AMU	ANA	ANR	AOJ	ART	ARU	ASL	ATR	AUA	AVA	AWC	AWM
AWW	AXM	AZA	AZI	B2V	BAW	BEC	BEL	BER	BGF	BGH	BHP	BIE
BJN	BKP	BQB	BRS	BSX	BTN	C9G	CBJ	CCA	CCM	CEB	CEF	CES
CFG	CIB	CQH	CQN	CSA	CSC	CSN	CTN	CTV	CYP	DAL	DAT	DCS
DKH	DLH	DNU	DNV	DQA	DRK	DTR	EAA	EDW	EIN	ETD	ETJ	EVA
EVE	F2I	FFT	FHY	FIN	FLI	FPY	FRN	FTZ	G2X	G4I	G8E	GAP
GBB	GCR	GFA	GHT	GLG	GMI	GMR	GSW	GWI	HDA	HFY	HKJ	HRM
HVN	I2L	I2T	IAC	IAW	IBE	IBS	IGO	IND	IRA	IRC	ISR	ISS
IYE	IZG	JAD	JAS	JAV	JSA	JST	JZR	KAC	KAY	KFR	KGL	KHV
KKK	KNE	KZR	LAN	LAO	LBT	LFO	LIM	LJB	LKE	LLC	LLM	LLP
LMU	LZB	MAC	MHK	MJF	MJN	MLD	MLM	MLR	MMA	MON	MOV	MRJ
MSC	MSR	MXA	MYX	NIA	NKS	NLY	NMA	NMB	NSR	NVD	NVR	NWS
OAW	OBS	OHY	ONE	ORF	OZW	PGT	PIA	PIC	PTI	QAF	QTR	R1T
RBA	RBG	RCT	RFJ	RJA	RJD	ROT	RYW	RZO	SAA	SAI	SAS	SBI
SDM	SEY	SFJ	SFW	SGG	SHJ	SHU	SKU	SLK	SND	SNX	SOL	SUD
SVR	SVW	SWM	SWR	SYA	SYR	TAE	TAI	TAM	TAP	TAR	TBJ	TBZ
TCW	TCX	TGW	THY	TJS	TNA	TVS	TXP	UAL	UEA	UJX	UKN	UNA
USA	UTA	VAR	VIM	VIP	VIV	VJC	VKG	VLG	VNL	VOI	VRD	VRE
VVC	WGT	WHT	WOW	WRC								

CONCURRENT REQUIREMENTS

****CONF 001 thru 002**

Accomplishment of this Service Bulletin requires the prior or simultaneous accomplishment of the following Service Bulletin(s):

Service Bulletin No. A320-34-1127

NOTE: Service Bulletin No. A320-34-1127 (NAVIGATION - AIR DATA - INSTALL SEXTANT PITOT PROBE PN C16195AA) applies MOD No. 25998P4400.

****CONF 003**

None

REFERENCES / REPERCUSSIONS

****CONF ALL**

TFU	None
OEB	None
AOT	None
SIL	None
ISI	None
LINE MAINTENANCE AFFECTED	No
LIFE LIMIT	None

A318/A319/A320/A321

SERVICE BULLETIN SUMMARY

OTHERS	Operator Information Transmission (OIT) No. 999.0123/14
--------	---

NATURE OF THE WORK

AIRCRAFT	NO
EQUIPMENT	YES
HARD	NO
SOFT	NO
OBRM	NO

MANPOWER

****CONF 001**

Task 341170-831-801-001: Modification	
TOTAL MANHOURS	4.50
ELAPSED TIME (HOURS)	2.50

****CONF 002**

Task 341170-831-801-001: Modification	
TOTAL MANHOURS	4.50
ELAPSED TIME (HOURS)	2.50

****CONF 003**

Task 341170-831-801-001: Modification	
TOTAL MANHOURS	4.50
ELAPSED TIME (HOURS)	2.50

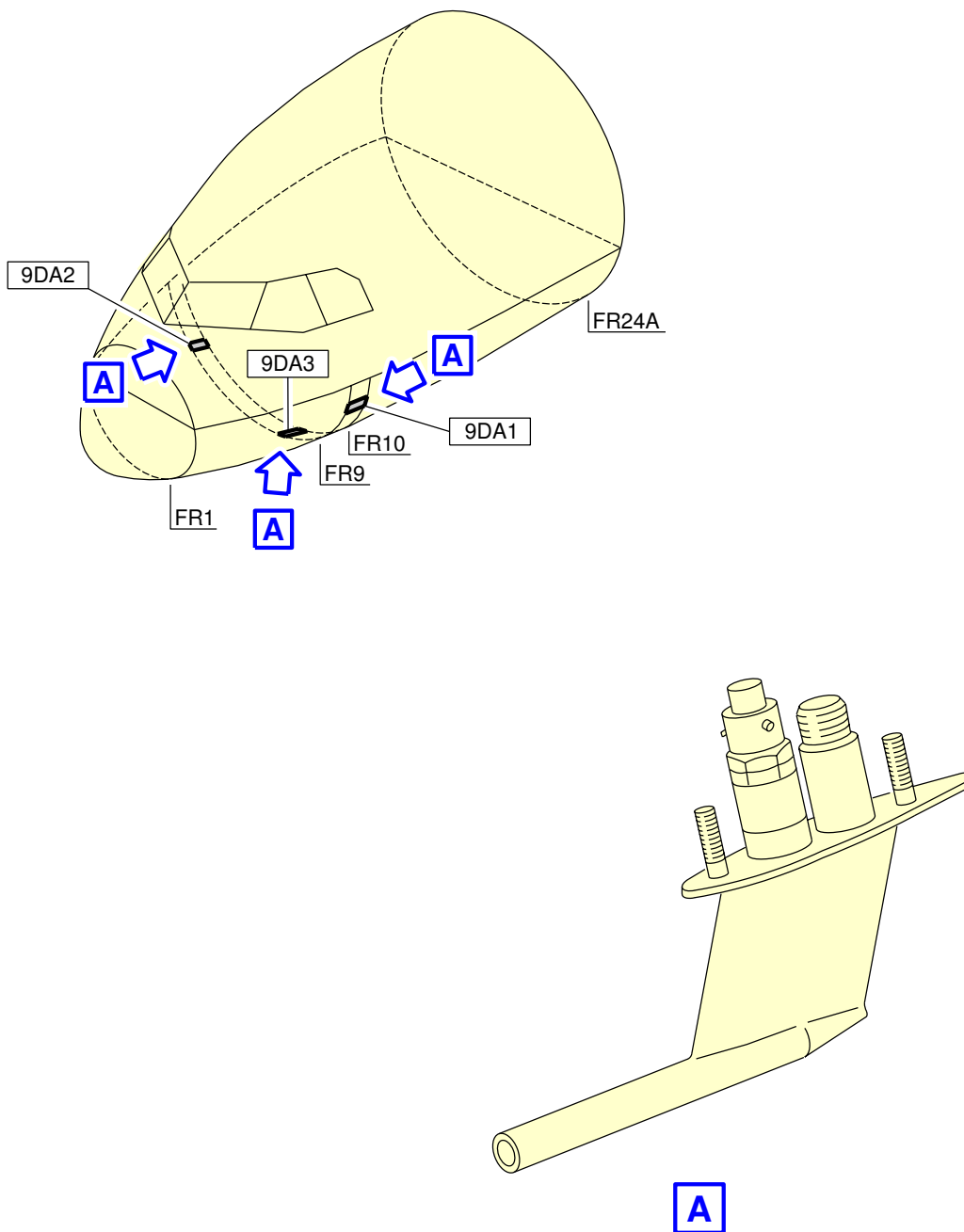
APPENDICES

****CONF ALL**

Appendix 01 - Elapsed Time Assumption

Appendix 02 - Retrofitted Modifications

**CONF ALL



N_SB_341170_5_SAAA_01_00

Figure A-FSAAA - Sheet 01

A318/A319/A320/A321

SERVICE BULLETIN SUMMARY

This Page Intentionally Left Blank

AIRBUS
CUSTOMER SERVICES DIRECTORATE
1 Rond Point Maurice Bellonte
31707 BLAGNAC CEDEX
FRANCE
Tel : (33) 5 61 93 33 33
Telex : AIRBU 530526F
Fax : (33) 5 61 93 42 51

MANDATORY MANDATORY MANDATORY

ATA SYSTEM: 34

TITLE: NAVIGATION - GENERAL - INSTALL GOODRICH PITOT PROBES PN 0851HL.

MODIFICATION No.: 25578P4366 150799P11779 151182P18009

This document contains AIRBUS PROPRIETARY INFORMATION and shall at all times remain the property of AIRBUS; no intellectual property right or licence is granted by AIRBUS in connection with any information contained in it. It is delivered on the express condition that said document and the information contained in it shall be treated as confidential, shall not be used for any purpose other than that for which it is hereby delivered. It shall not be disclosed in whole or in part to third parties and shall not be duplicated in any manner (except for the purposes of performing the tasks described hereunder and provided that any recipient of such document shall comply with the conditions herein), without AIRBUS prior written consent.

1. PLANNING INFORMATION

****CONF ALL**

A. EFFECTIVITY

NOTE: MOD No. 150799P11779 and MOD No. 151182P18009 are applicable by Service Bulletin only.

NOTE: This Service Bulletin is only applicable to aircraft equipped with THALES pitot probes PN C16195AA or PN C16195AB.

(1) Models

318-111	318-112	318-121	318-122	319-111	319-112	319-113	319-114
319-115	319-131	319-132	319-133	320-211	320-212	320-214	320-216
320-231	320-232	320-233	321-111	321-112	321-131	321-211	321-212
321-213	321-231	321-232					

(2) Effectivity by MSN

0029 0045-0046 0049-0057 0059 0064-0073 0076-0078 0081-0088 0093-0094 0096
0099 0104 0110-0113 0116-0119 0121-0127 0135 0137-0138 0140-0142 0148-0150
0152-0154 0157-0162 0164-0169 0171-0176 0178 0181-0183 0185 0189-0190 0192
0194-0195 0197-0203 0205-0213 0216-0220 0224 0229-0232 0234 0240-0244
0248-0249 0251-0256 0259-0269 0272-0277 0279 0281-0282 0284 0289-0298

5 DATE: Dec 18/98

SERVICE BULLETIN No.: A320-34-1170

REVISION No.: 30 - Jun 18/15

Page: 1

A318/A319/A320/A321

SERVICE BULLETIN

0300-0303 0306-0309 0311-0312 0314 0316-0325 0328-0333 0339-0343 0345-0347
0350-0351 0353-0362 0364 0366-0368 0370-0373 0376 0378 0380-0383 0385-0388
0390-0391 0393 0395-0396 0398-0410 0412-0424 0426-0432 0434-0436 0438-0439
0441-0442 0444-0445 0447-0452 0454-0460 0462-0466 0468-0470 0472-0477
0479-0480 0482-0490 0492-0493 0495-0497 0499-0508 0510-0520 0522-0528
0530-0535 0537-0543 0545-0546 0548-0589 0591-0597 0599 0603-0607 0609-0614
0616-0617 0619-0623 0627 0629-0631 0633-0636 0638-0673 0675-0707 0709
0711-0752 0754-0755 0757-0771 0773-0776 0778-0783 0785-0788 0790-0795
0797-0798 0800-0811 0813-0815 0817-0852 0854-0859 0861-0871 0873-0874 0876
0878-0886 0888-0898 0900 0902-0929 0931-0937 0939-0940 0942-0955 0957-0960
0962-0968 0970-0984 0986-0992 0994-0997 0999 1001-1019 1021-1023 1026-1027
1029 1031-1035 1037-1043 1045-1069 1071-1072 1075-1079 1081-1097 1099-1106
1108-1112 1114-1122 1124-1132 1134-1150 1152-1155 1157-1160 1162-1168
1170-1172 1174-1175 1177-1184 1187 1189 1191-1200 1202-1203 1205-1213 1215
1217 1219-1226 1229-1234 1236-1239 1242-1252 1254-1256 1258-1259 1261-1266
1268-1269 1272 1274-1277 1279 1281-1298 1300-1301 1303-1308 1310-1311
1313-1326 1328-1329 1331-1332 1334-1336 1338-1343 1345-1351 1353-1356
1358-1360 1362-1364 1366 1368-1373 1375-1384 1386 1388-1397 1399-1403
1406-1414 1416-1421 1423-1440 1442-1443 1445 1447-1448 1450-1451 1453-1457
1459-1463 1465-1469 1472-1475 1477 1479-1492 1494-1501 1503 1507-1523
1525-1527 1529-1531 1533-1541 1543 1545 1547-1552 1554-1556 1558-1560
1562-1563 1565-1586 1589-1590 1593-1601 1603-1609 1612-1614 1617-1618
1620-1621 1624-1628 1630-1631 1633-1637 1641 1643-1644 1646-1649 1651
1653-1657 1659 1661-1666 1668-1674 1679-1690 1693-1694 1696-1697 1700-1704
1706-1711 1713-1720 1722-1724 1727-1728 1730-1732 1734 1736-1738 1740-1747
1749-1761 1763-1767 1770-1771 1773-1782 1786 1788-1790 1792-1796 1799-1801
1803-1805 1809-1810 1812 1814-1816 1818-1821 1824-1826 1828-1829 1831-1834
1836-1837 1839-1847 1850-1851 1853-1858 1862-1866 1869-1872 1874-1877
1880-1884 1886-1890 1892-1893 1895 1897 1899 1901-1903 1905 1907-1910 1912
1914 1918 1921-1923 1925-1926 1928-1929 1932-1935 1940-1947 1950 1952
1954-1955 1957-1963 1965-1966 1968-1972 1974 1976 1979-1980 1982 1986-1988
1990 1993 1995-1999 2002-2004 2008 2010-2013 2016 2018-2019 2023 2026-2030
2032-2033 2038-2041 2045-2048 2052 2057 2060 2064 2066-2067 2069-2070
2072-2074 2076-2080 2082-2084 2086-2089 2091-2098 2101-2108 2110 2113-2118
2121-2123 2126-2127 2133 2135 2137-2139 2142-2145 2151 2156-2158 2161-2169
2175 2179-2180 2183 2185-2186 2188-2195 2197-2198 2200 2203 2206-2207
2209-2211 2216-2217 2220 2222-2223 2225-2227 2232-2234 2236 2240-2243
2247-2248 2250 2253-2256 2258 2260-2261 2263-2264 2267 2270 2272 2278 2282
2287-2288 2290-2291 2294-2295 2301-2306 2310-2313 2316 2318 2320-2321
2323-2324 2328 2330-2333 2337 2339-2342 2346-2349 2351 2356-2359 2363-2367
2369 2372-2374 2376-2377 2381-2382 2388-2394 2397 2399-2400 2405-2407
2409-2411 2413 2417 2419 2421-2422 2425 2429-2430 2432-2434 2439 2441
2443-2444 2448 2458-2459 2462 2464-2466 2470 2472-2474 2476 2479-2480
2482-2483 2485-2488 2490 2496-2497 2502 2507 2509-2510 2513 2516-2518
2521-2524 2529-2531 2534 2536 2539-2540 2542 2544 2550 2552-2553 2556 2560
2563-2564 2566-2572 2575-2576 2583-2586 2588-2590 2592-2593 2595-2599
2602-2603 2607 2612-2613 2615-2616 2618-2625 2628-2635 2638-2639 2641 2645
2648-2650 2653-2656 2658-2662 2664-2665 2668-2670 2673-2676 2678-2679
2682-2683 2685 2688 2690 2692 2694-2700 2704 2706-2707 2711-2713 2718-2720
2723-2724 2726 2728 2730-2732 2734 2736-2741 2745 2747-2749 2751-2753 2756
2758-2764 2767-2768 2773-2776 2778 2783-2786 2788-2790 2792-2794 2797-2801
2806-2811 2813 2816-2817 2820-2822 2826 2828 2830-2831 2833 2835-2838 2840
2842-2846 2851-2853 2856-2859 2863-2865 2867 2869-2870 2872 2874-2876 2879

A318/A319/A320/A321

SERVICE BULLETIN

2881 2883 2885-2887 2889 2892-2894 2896-2898 2902-2904 2907-2908 2910-2914
2916 2919-2922 2924 2926-2927 2929-2933 2936-2937 2939 2942-2944 2947 2949
2953 2955-2958 2962-2966 2968 2971 2974-2976 2978 2981 2983 2987-2991
2993-2997 3000-3002 3004-3007 3011-3014 3016-3019 3021-3028 3030-3035 3037
3040 3043-3044 3047-3050 3052 3054-3056 3058 3060 3062-3064 3066-3068
3070-3071 3073-3076 3078-3081 3083 3085-3086 3089 3093-3097 3100-3102
3104-3106 3109 3111-3112 3114-3117 3120-3121 3123-3124 3128-3130 3133
3135-3136 3139-3142 3145-3146 3149 3151-3152 3154-3160 3162 3164-3165 3167
3169 3171-3174 3178-3183 3188 3191-3194 3196 3198-3199 3201-3204 3209-3216
3218-3225 3227 3229-3230 3232 3234-3238 3240 3242-3246 3252 3254-3255
3259-3261 3264 3266-3268 3270-3272 3274 3277-3278 3280-3282 3284 3286
3288-3291 3293-3295 3297-3302 3304-3305 3308-3309 3312-3328 3330-3331
3333-3338 3340 3343-3347 3349 3351-3353 3355-3359 3361-3365 3367-3371
3373-3377 3379-3380 3382 3385-3386 3388-3398 3400 3402-3404 3406-3407 3410
3412 3414-3415 3417 3421-3425 3427-3428 3431 3433 3436-3439 3443-3449
3452-3454 3457-3458 3460-3462 3464-3465 3468-3469 3472-3473 3475-3478 3480
3482-3487 3489-3490 3492 3494 3496-3506 3508-3509 3511-3516 3519 3521-3522
3524 3526-3527 3529-3530 3532-3536 3540-3543 3545-3546 3549-3551 3556-3557
3560 3563-3565 3568 3573-3576 3582-3586 3588-3589 3591 3594-3596 3598
3600-3602 3604-3607 3609-3610 3614-3615 3617-3621 3626-3633 3635-3637
3640-3644 3646 3648-3649 3651 3656-3658 3660-3663 3666-3667 3669-3671 3673
3676 3679-3680 3684-3690 3694-3695 3697 3699-3701 3703-3704 3706 3708-3712
3714-3715 3717 3721 3723 3726-3730 3732-3733 3737-3740 3744-3745 3748-3753
3755 3758-3759 3761-3762 3765 3767 3769-3770 3772-3773 3776 3778-3782
3785-3787 3789-3792 3794 3796 3802-3803 3809 3812-3813 3815-3818 3820
3822-3823 3826 3829-3835 3838-3841 3846 3850 3853 3856-3858 3861-3863
3865-3866 3868 3872-3875 3878-3883 3885-3886 3889 3891-3896 3905-3908
3911-3912 3918-3919 3921 3923-3926 3928 3931-3933 3939 3942-3945 3949-3950
3952 3954-3957 3960 3962-3964 3966-3967 3970 3972 3974 3976-3978 3984-3985
3989 3993-3998 4000 4002 4004 4007-4009 4013 4018-4021 4024-4025 4029-4030
4032-4033 4035 4039 4041 4049-4050 4052 4055 4058-4059 4061 4064 4068 4070
4074-4075 4078-4079 4082-4083 4086 4088-4089 4095-4096 4098-4099 4101-4103
4106-4108 4110 4112-4114 4116-4117 4119 4121 4123 4126-4128 4130 4133-4134
4136 4138 4142-4143 4145-4152 4154-4156 4158 4160-4166 4169-4171 4185
4187-4188 4190 4192-4193 4195 4197 4199 4201-4204 4207 4211-4213 4216 4218
4227 4231 4235-4238 4242-4243 4249 4253-4256 4263 4265 4269-4270 4272
4275-4278 4280 4282 4285 4288 4291 4293-4294 4301-4302 4304-4307 4310-4312
4315-4316 4326 4328-4329 4333-4334 4344 4346-4347 4353-4354 4361 4367-4368
4378 4384 4386 4388 4390 4401 4404 4411 4413 4420 4424 4426 4428-4429 4433
4448 4458 4462-4464 4468 4470 4477-4478 4480-4481 4486 4488-4489 4502-4503
4506 4510 4518 4520-4521 4523-4525 4535-4536 4539 4541 4551-4552 4555
4557-4559 4562 4565 4568 4571-4573 4575 4581-4583 4587 4594 4596 4600 4603
4606 4609-4611 4614 4616 4619 4622-4623 4630-4631 4634 4637 4639 4641-4642
4648 4650 4652-4653 4655 4658 4661 4663 4668 4670 4674 4678-4679 4681
4688-4691 4694 4699 4704 4715 4720 4725 4727-4728 4730-4733 4735 4742-4743
4745 4752 4757 4759 4762 4764 4768 4780 4791 4793 4795 4797 4805-4807 4814
4817 4824 4827 4833 4840 4842-4843 4847-4851 4853 4855-4856 4859-4861 4865
4867 4869-4870 4875 4878 4882 4885 4889-4890 4893-4894 4898 4905 4910 4915
4917 4924 4932-4933 4935 4937 4940 4948 4956-4961 4964 4966 4969 4975
4979-4981 4988-4992 4998-4999 5001 5003-5004 5011 5013 5017-5018 5024-5026
5030-5031 5033-5035 5038 5040 5043 5055 5058 5070-5071 5074 5079 5085-5086
5096 5098-5099 5102 5106 5115 5126 5128 5130-5131 5133-5134 5137 5143 5149
5153 5158 5163 5165 5167 5169 5171 5173 5175 5177 5179-5180 5191 5200 5204

A318/A319/A320/A321

SERVICE BULLETIN

5206 5215 5221 5226 5235 5244 5246 5252 5257 5261 5269 5272 5276 5282-5283
 5287 5290 5292 5294-5295 5300 5307 5317 5321 5325 5329 5332 5336 5339 5344
 5347 5350 5353 5357-5359 5366-5368 5372 5374 5382-5383 5393 5397 5400-5401
 5404 5409 5414 5420 5422-5424 5428 5430-5431 5444-5445 5448 5452 5455 5457
 5462 5464 5467-5468 5474-5475 5478-5479 5486 5491 5500-5502 5504-5505
 5512-5513 5515 5522 5526 5530 5533 5535 5538 5547 5559 5569-5570 5576
 5581-5582 5587-5588 5590 5593-5594 5599 5603 5606-5607 5610 5612-5613 5616
 5619-5620 5625 5627 5634 5636 5642 5644 5648 5652-5653 5657 5659 5665
 5673-5674 5681 5684 5692 5696 5703 5706 5718 5728-5729 5733-5734 5737 5742
 5751 5762-5763 5767-5768 5772-5774 5779 5784 5792 5795 5800 5812 5815 5822
 5824 5833 5839 5843-5844 5846 5851 5856 5862-5863 5866-5867 5870 5872 5876
 5878 5887-5889 5891 5897 5899 5901 5903 5905-5906 5908 5914 5918-5919
 5925-5926 5931 5933 5939 5941 5943 5948 5957 5966 5968-5969 5978 5980 5985
 6016 6027-6029 6035 6037-6038 6053 6056 6059 6066-6067 6091 6100 6114 6119
 6122 6126 6129 6133 6152 6155-6156 6168 6171-6172 6175 6181 6194 6210 6214
 6221 6230 6232 6236 6249 6255 6264 6268 6290 6299 6314-6315 6337-6338 6342
 6351 6376 6387 6389 6392 6395 6420 6427 6432-6433 6435 6438 6443 6446 6454
 6459 6468 6477 6479 6483 6501 6510 6518 6542 6557 6571 6607 6638 6660 6684
 6691 6740 6841 6883 6933

(3) Effectivity by Operator

The Operator/MSN relationship is provided for information only and is correct at the time of issue in accordance with the information available to AIRBUS. Any future changes resulting from transfer of an aircraft from one operator to another will not be reflected in this list unless the Service Bulletin is revised for another reason.

OPERATOR	MSN
03Q	0770
03X	2421
11S	4211
15S	1589
15T	0764 1494 2910 3164 3261
16T	4024 4679
17R	5768
17S	3333
20Q	4842
26S	0368
27V	3826
29S	0291 0292
31P	0229
31V	0082 0099 0164 0293 0317 0332 0420 0436 0605 0855 0885 0932 0943 1048
32Q	1283
35T	5040
35U	0088 0199 0240 0241 0264
36R	1305
38W	1194
41S	0630
43S	4650

A318/A319/A320/A321

SERVICE BULLETIN

OPERATOR	MSN
47P	0619
48P	2192
52T	1599
53Z	1468
54S	5261
59Z	1556
61W	0112
62X	3402
66P	0295 0424
69X	0212 0219 0300 0328 0449 0588 0677
73W	0087
74T	2165 4768
76W	0140 0157
79W	3751
80X	2748
85T	0190 0234
85U	5792
86P	0913
86Z	0409 0419 1706 1750
87Q	0052
89T	3356
90Q	0594
91X	2837
94W	1818
95V	3379
95W	2949 4199
98W	0434 0441 0515 0516 0524
AAF	0639 2870 3136 3242 3289
AAR	0802 1174 1356 1511 2041 2110 2226 2247 2290 2397 2459 3244 3297 3437 3483 3496 3641 3873 4112 4142 5035 5169 5173 5287 5350 5382 5462 5500 5636 5767 5774 6299 6395
AAW	3224 3236 3615 3657 4004 4521 5414 5448
AAY	1229 1255 1262 1288 1292 1318 1347 1530 1540 1694
ABL	1636 1670 1734 1970 2045 2808 2840 2943
ABQ	1467 3974 5891 5943
ABY	2764 4061 4243 4310 4468 4524 4806 4848 4890 4958 5017 5276 5307 5423 5452 5502 5576 5718 5772 5889 5903
ACA	0059 0068 0073 0084 0122 0126 0127 0141 0149 0150 0154 0159 0174 0175 0183 0210 0231 0232 0242 0248 0253 0254 0255 0265 0277 0284 0290 0309 0324 0330 0341 0378 0403 0404 0546 0572 0634 0656 0670 0672 0682 0688 0691 0693 0695 0697 0711 0719 0721 0728 0732 0736 0740 0742 0752 0757 0769 0773 0779 0785 0800 0813 0817 0829 0831 0840 0845 1562 1577 1673 1719 1742 1853 1864 1874 1940 2018 2145
ADR	4282 4301

A318/A319/A320/A321

SERVICE BULLETIN

OPERATOR	MSN
AEE	1428 1433 1856 1909 1996 2359 2828 3033 3066 3074 3162 3302 3316 3322 3365 3392 3423 3439 3462 3478 3484 3519 3526 3527 3709 3714 3745 3748 3753 3773 3785 3812 3820 3829 3850 3878 4165
AFL	2052 2069 2072 2091 2106 2116 2133 2144 2233 2330 2337 2342 2875 2903 2912 2920 2947 2957 2965 3052 3063 3157 3191 3267 3334 3373 3410 3511 3545 3574 3627 3631 3640 3644 3699 3711 3778 3786 3789 3794 3823 3835 3923 3942 3954 3998 4058 4074 4099 4103 4116 4133 4148 4160
AGY	0322 0351
AHY	0331 2487 2516 2588 2685 2788 2846 2853 2865 2991 3006
AIB	0138
AIC	0045 0046 0049 0050 0051 0056 0057 0398 0416 0423 0431 0432 0486 0490 0499 2593 2624 2629 2907 3130 3146 3212 3271 3288 3300 3305 3326 3340 3344 3367 3498 3551 3557 3573 3619 3620 3687 3752 3792 3822 3874 3918 3955 3970 4002 4009 4020 4029 4052 4078 4089 4096 4121 4138 4155 4164 4201 4212 4236 4237 4280 6446
AIJ	0169 0707 1132 1162 1179 1244 1259 1308 1322 1780 2048 2227 2539 3021 3123 3149 3160 3286 3304 3312 3374 3508 3514 3667 3690 4235 4304 4411 4730 4733 4924 4933 5163 5221 5358 5372 5653 5665 5867 5878 5933
ALK	2584 3397 3636 4694 4869 4915 5086
AMC	2113 2122 2189 2291 2332 2382 2665 2768 3056 3068
AMU	0620 0631 0908 0928 1758 1790 1850 1912 1926 1962 4197
ANA	0167 0383 0413 0482 0501 0507 0531 0534 0549 0554 0658 0669 0685
ANR	0445 0671 0726
AOJ	4503
ART	0142 0244 0333 0359 0533 0662 0888 0936
ARU	0573 0582 0805
ASL	1140 1159 2621 2645 3252 3317
ATR	0314 0393
AUA	0552 0570 0581 0768 0776 0797 0920 0935 1137 1150 1189
AVA	1612 1634 2066 2328 2333 2358 2367 2377 2394 2523 2544 2552 2575 2662
AWC	2564
AWM	0765
AWW	0557 0597

A318/A319/A320/A321

SERVICE BULLETIN

OPERATOR	MSN
AXM	0667 0743 0874 1286 2137 2425 2576 2612 2633 2656 2683 2699 2760 2816 2826 2842 2881 2885 2926 2944 2956 2989 3000 3018 3064 3117 3140 3154 3173 3182 3194 3201 3223 3232 3277 3291 3299 3327 3338 3353 3370 3394 3404 3427 3448 3477 3486 3489 3505 3521 3536 3549 3568 3576 3582 3610 3628 3648 3679 3701 3715 3729 3765 3776 3813 3875 3963 3997 4019 4035 4070 4079 4088 4098 4126 4147 4263 4278 4293 4302 4333 4346 4361 4367 4386 4390 4404 4426 4458 4462 4477 4486 4557 4571 4582 4793 4797 4807 4882 4889 4917 4964 4969 4979 4980 4989 5098 5137 5149 5153 5165 5200 5215 5272 5283 5325 5344 5347 5353 5359 5397 5420 5428 5430 5431 5468 5505 5547 5593 5619 5627 5657 5703 5706 5762 5812 5824 5839 5846 5851 5863 5866 5888 5897 5905 5908 5914 5918
AZA	0477 0488 0495 0513 0514 0526 0532 0576 0583 0586 0593 0599 0819 0848 0940 0951 0959 1138 1168 1217 1220 1226 1448 1457 1473 1480 1489 1722 1740 1745 1770 1779 2033 2057 2074 2083 2086 2101 2127 2869 2932 2995 3076 3079 3080 3115 3295 3362 3412 3563 3598 3609 3643 3666 3695 3732 3815 3846 3885 3906 3921 3956 3976 3978 4075 4108 4119 4143 4152 4195 4249 4520 4523 4536 4759 4764 4859 4875 4910 5018 5130 5294 5383 5424
AZI	0527
B2V	0185
BAW	1014 1082 1115 1118 1142 1177 1193 1197 1222 1225 1232 1236 1239 1258 1261 1279 1295 1329 1338 1380 1384 1418 1423 1424 1440 1445 1466 1482 1509 1510 1513 1529 1537 1558 1574 1590 1594 1604 1606 1613 1661 1663 1665 1687 1689 1690 1696 1708 1711 1754 1760 1771 1782 1804 1814 1829 1834 1871 1883 1892 1899 1902 1907 1910 1958 1987 2038 2040 2098 2188 2190 2194 2305 2320 2323 2324 2351 2363 2389 2429 2441 2466 2536 2653 2694 2697 2720 2799 2981 3049 3081 3235 3254 3290 3301 3314 3351 3468 3499 3512 3550 3607 3649 3697 3703 3721 3726 3912 3926 4007 4039 4185 4238 4265 4306 4464 4551 4725 4791 4975 5634 5784 5856 5948 5985 6028 6091 6129 6155 6290
BEC	3199 5538
BEL	0644 1086 1102 1160 1336 1388 1963 2114 2392 2400 2700 2763 2810 3255 3790 3895 4275
BER	1717 1775 1889 1961 1966 1988 2003 2619 3055 3093 3121 3178 3202 3213 3328 3343 3464 3482 3502 3515 3516 3532 3708 3749 3865 3945 4013 4101 4161 4269 4291 4329 4334 4433 4510 4565 4606 4728 4743 4988 5038 5126 5133 5191 5522 6168 6432 6454 6501
BGF	3188
BGH	1087 2844 2863 3139
BHP	2968 3245 3422 3604 4033 4187 4294 4631
BIE	0519 0827 0891
BJN	3617 4956
BKP	2254 2310 2366 2417 2509 2531 2634 2648 2660 2664 2783 3421 3424 3454 3694 3759 3911
BQB	1703

A318/A319/A320/A321

SERVICE BULLETIN

OPERATOR	MSN
BRS	2263
BSX	0648 0650
BTN	1541 1551
C9G	1747 1846
CBJ	4388 4428
CCA	0876 0921 1296 3215 3221 3337 3461 3506 3601
CCM	3882 3952 5887 5906
CEB	2556 2586 2625 2638 2786 2790 2821 2831 2852 2876 2994 3048 3272 3762 3767 4861 4870
CEF	2801 3085
CES	0665 0754 0838 0854 0897 0909 0925 0939 0984 0986 1041 1072 1093 1108 1285 1303 1316 1345 1377 1386 1601
CFG	5969 6053 6376 6459
CIB	0774 0809 0884 0894 0905 0957 0971 1416 1437 1607
CQH	0978 2939 3014 3023
CQN	0696 0698 0704 0705
CSA	3043 3094 3406 3436 3452 3660 3892
CSC	0540 0551 0556 0591 0878 0902 0915 0919 1013 2313 2348 2510 2534 2597 2639 3114 3116 3124 3158 3167 3196 3210 3386 3449 3583 3591 3680 3730 3893 3962 3996 4018 4068 4288 4326 4378 4420 4424 4525 4575 4619 4642 4731 4824 4856 4905
CSN	0712 0718 0720 0722 0849 0859 0881 0895 0900 0950 0966 1035 1039 1057 1596 1614 1776 1788 1971 1974 1986 1995 2004 2008 2067 2080 2200 2203 2232 2521 2530 2713 2741 2759 2767 2809 2936 2971 3067 3075 3112
CTN	0767 0833 1009 1029 1237 1252
CTV	0839 0892 1635 2598 2692 3861 4961
CYP	0256
DAL	0118 0121 0125 0152 0153 0160 0171 0192 0197 0206 0208 0213 0262 0263 0272 0273 0281 0282 0297 0298 0306 0307 0318 0319 0329 0339 0340 0355 0358 0360 0367 0372 0380 0381 0387 0388 0399 0408 0410 0417 0418 0766 0778 0786 0801 0807 0818 0830 0832 0846 0903 0907 0911 0923 0962 0964 0981 0988 0996 1011 1037 1058 1062 1191 1230 1249 1324 1325 1346 1392 1414 1434 1453 1456 1483 1498 1501 1520 1535 1543 1549 1567 1570 1582 1633 1641 1646 1659 1662 1683 1685 1693 1709 1714 1738 1746 1752 1766 1774 1789 1796 1800 1810 1812 1815 1820 1824 1828 1833 1839 1875 1897 1923 1959 1976 1982 1990 2002 2013 2026 2039 2047 2082 2087 2092 2095
DAT	0311 0395 0426 0525 0999
DCS	1053 3243
DKH	2975 3027 3234 3268 3368 3485 3596 3605 3967 3984 4064 4102 4154 4276 4401 4429 4573 4587 4652 4833 4840 4981 5013 5070 5071 5131 5226 5329 5339 5455 5491 5674 5737 5876 6172 6221 6315 6392 6433 6435 6477 6542

A318/A319/A320/A321

SERVICE BULLETIN

OPERATOR	MSN
DLH	0069 0070 0071 0072 0078 0083 0086 0093 0094 0104 0110 0111 0116 0172 0412 0458 0468 0473 0474 0484 0493 0502 0505 0518 0560 0563 0564 0567 0595 0609 0610 0616 0623 0627 0636 0641 0651 0652 0679 0689 0692 0694 0699 0700 0717 0723 0729 0738 0744
DNU	0406 0444
DNV	1630 1805 1841 2093 2179 2241 2751 3179
DQA	2347 2599
DRK	2306 2346 3950
DTR	0113 2102
EAA	0386
EDW	0942 0947 1026
EIN	0926 1023 1094 1242 1394 1443 2191 2206 2217 2250 2256 2272 2294 2364 2374 2399 2409 2411 2432 2486 2542 2583 2635 3054 3102 3129 3169 3318 3345 3377 3501 3755 3781 3857 4572 4634 4678 4715
ETD	0350 1945 1947 1955 2167 3004 3050 3676
ETJ	0325 0373 0428
EVA	3363 3886
EVE	5642
F2I	0085 0148 0168 0203 0220 0230 0243 0249 0251 0294 0301 0391 0422 0460 0496 0497 0538 0555 0714 0716 0724 0730 0758 0976 1010 1068
FFT	1515 1579 1583 1684 1759 1781 1786 1803 1943 1980 1997 2010 2012 2019 2030 2103 2198 2209 2236 2240 2253 2258 2260 2287 2318 2406 2448 2483 2518 2695 2806 2836 2857 3389 3431 4127 4204 4253 4254 4272 4307 4562 4641 4668 4688 4704 4727 4745 5526 5581
FHY	0580 0771 2524 3025 3891 4207 4658 5096
FIN	1184 1364
FLI	2186 3905 5079
FPY	0189 0279 0342 0427
FRN	0647 0660
FTZ	1145
G2X	0347 0653
G4I	1157 1795 2507
G8E	2029 2077
GAP	0706 0745 2162 2183
GBB	0067
GCR	4600
GFA	4030 4059 4083 4146 4158 4188 4218 4255 4502 4541 4780 4827 4860 4865 5025 5074 5171 5175 5180 5257 5321 5336
GHT	0438
GLG	1866 1872 1882 1925 2078 2126
GMI	0684 0970 0995 3019 3407 3533 3560 4663 4691 5085 5843
GMR	1407
GSW	3589 3818

A318/A319/A320/A321

SERVICE BULLETIN

OPERATOR	MSN
GWJ	0117 0135 0137 0161 0162 0200 0201 0202 0209 0216 0217 0218 0267 0268 0269 0346 0382 0401 0646 0654 0794 1016 1077 1084 1089 1136 1147 1155 1170 1172 1209 1277 2607 2628 2632 2813 2833 2976 3011 3128 3172 3193 3352 3358 3375 3500 3534 3839 3841 4166 4227 4256 4285 4998 5043 5457 5467 5535 5569 5941 5978
HDA	0633 3369 3669 5024 5030
HFY	1004
HKJ	2706 3073 4878
HRM	0517 0535 0642 0666 0879
HVN	2255 2974 3005 3013 3022 3198 3315 3355 3600 3737 3862 3964 3966 4136 4213 4277 4311 4315
I2L	0371 0579 0760
I2T	1631 1682
IAC	0096 0396 0451 0469 0492
IAW	5115 5290 5464
IBE	0158 0173 0176 0207 0224 0266 0274 0323 0356 1021 1027 1154 1362 1572 1655 1674 1681 1716 1793 1809 1836 2115 2220 2225 2242 2264 2270 2311 2357 2365 2381 2391 2472 2488 2563 2736 2756 2889 2996 3078 3209 3320 3380 3443 3651 3744 5486 5570 5692
IBS	1047 1059 1067 1099 1101 1119 1125 1198 1439 1450 1516 1736 2104 2143 2248 2807 5501 5590 5729 5815
IGO	3357 3414 3453 3457 3497 3541 3618 3782 3863 3943 4008 4113 4156 4216 4312 4328 4384 4481 4488 4506 4518 4535 4552 4603 4609 4614 4630 4637 4752 4757 4762
IND	0343 0357
IRA	0303 0312 0345 0575 0857
IRC	0354 0414 0480
ISR	4354 4413
ISS	0737 0749
IYE	4653 4690
IZG	0376 0400 0407
JAD	0459 0537 3246
JAS	5478
JAV	0029
JSA	2316 2356
JST	1195 1408 2169 2185 2197 3717
JZR	3919 3939 4162 5033 5625 5833
KAC	0181 0182 0195 2046 3957
KAY	4470
KFR	2650
KGL	0663 0668 0787 0954 1060 1293 1554
KHV	2303 2480
KKK	0604 0614 0675 0761 0808 0823 0968 0974 1124 1390 1438 1451 1503 1624 1730 1950 2747 2753

A318/A319/A320/A321

SERVICE BULLETIN

OPERATOR	MSN
KNE	1942 1965 2123 2569 2776 3218 3238 3361 3396 3425 3475 3530 3787 3802 3809 3817 3868 3889 3894 3933 4055 4735
KZR	1042 3141 3614 5357 5401 5404 5613 5734 5870 5968 6029 6037
LAN	1304 1332 1351 1355 1491 1512 1526 1548 1568 1854 1858 1877 1903 2089 2096 2295 2304 2321 2572 2585 2845 2858 2864 2872 2886 2892 2894 3264 3280 3319 3330 3535 3556 3663 3671 3770 3772 3779
LAO	4596 4639
LBT	0793 0937 1121 1175 1597 1744 2158 3089 3480 3487 4623
LFO	0659
LIM	0828
LJB	3985
LKE	3240
LLC	0415 0967 0990 1715 2987 4203 4489
LLM	1054 1918 1969 1993 2413 2419 2439
LLP	0739 0883 0914 1007 1411 1723 2016 2118
LMU	0852 0977 1366
LZB	2540 2596 3309 3564 3780
MAC	4539 4568 5143 5206
MHK	0550
MJF	4353
MJN	3723 4117 4795
MLD	0622 0741
MLM	2550 3932 4622
MLR	1893 1946 2731 3106
MMA	0316 0973 1180 1247
MON	0864 0983 1015 1045 1081 1153 1207 1320 1413 1421 1571 1605 1637 1707 1763 1794 1941 2105 2142 2234 2553 2730 2793 3458 3522 3546 3575 5582 5606 6059 6126
MOV	3364 3403
MRJ	0530 1202 1300 1353
MSC	2094 2937 2966 3282 3323 3626 3840
MSR	0165 0166 0178 0194 0198 0366 0680 0687 0715 0725 2070 2073 2079 2088
MXA	0252 0259 0260 0261 0275 0276 0296 0320 0321 0353
MYX	0566
NIA	2874 3183 3219 3925
NKS	2433 2470 2473 2476 2485 2490 2560 2567 2590 2603 2622 2673 2679 2698 2704 2711 2723 2797 2893 2898 2929 2942 2963 2978 2983 3007 3017 3026 3165 3393 3395
NLY	2529 2668 2749 2867 2902 3415 3447 3504 3661 3689 3728 3830 4231 4316 4368 4581 4594 4611 4648 5246 5648
NMA	1697 1732 2676
NMB	3346 3586 5366 5400
NSR	0308
NVD	0211 0466 0528 0558 0561 0709 0747 1005 1626 1778 1998 2108
NVR	2211 2216 2410

A318/A319/A320/A321

SERVICE BULLETIN

OPERATOR	MSN
NWS	1219 1233 1276 1843 2649 2927 2933 3034 3120
OAW	1886
OBS	3758
OHY	0364 0385 0455 0543 0640 0661 0676 0792 0806 0810 0811 0835 0912 0916 0963 1008 2571 2688
ONE	3001 3030 3062 3214 3216 3371 3390 3438 3469 3509 3585 3602 3606 3635 3642
ORF	2566 4992
OZW	0429 1922
PGT	3831
PIA	2719 2758 2789 3031 3060 3097
PIC	2261 2267 2331 2340 2670 2922 3012 3621
PTI	1263
QAF	0927 1335 3994 4114 4170
QTR	1487 1566 1648 1656 1773 1895 1928 1957 2097 2107 2121 2138 2161 2288 2341 3274 4110 4130
R1T	1908
RBA	2023 2032 2135 2139 2195 3071
RBG	3152
RCT	1017
RFJ	0814
RJA	2953 3428 3685 3803 3832 4670 4817 4853 5099 5128 5177
RJD	1618
ROT	2931 2955 3220 3225
RYW	0569 5367
RZO	0795 2011 2390
SAA	4990 5011
SAI	0542 1497 2027 2496 2502 3105 3270
SAS	1183 1383 2817 2856 2883 2911 2958 2990 3086 3159 3192 3227 3335
SBI	1071 1078 1090 1091 1126 1129 1131 1149 1164 1167 1819 1870 2028 2064 2076 2369 2373 2464 2474 2618 2623 2641 2726 3070 3446 3473 3490 3494 3866 3880 4032 4150 5001 5026 5031 5106 5134 5167 5559 5607 6066 6171
SDM	0649 1130 1200 1379 1488 1560 1578 1654 1657 1679 1743 1753 1761 1767 1851 1863 1876 1890 2151 2163 2465 2497 2879 2913 2930 2964 3044
SEY	1944
SFJ	4555 4720 5102 5393 5512 5652 5773 5862 5931
SFW	0734 0994 1018
SGG	0076
SHJ	0910
SHU	2222 2243 3281 3298 3336 3838
SKU	0447 1400 1523 3171 3331
SLK	2517 2568 2775 3104
SND	1880 1999

A318/A319/A320/A321

SERVICE BULLETIN

OPERATOR	MSN
SNX	0289
SOL	0302
SUD	3040
SVR	0735 0775 0815 0841 0991 1012 1063 1152 1199 1484 1603 1720 1751 1777 1884 1901 1905 2117 2166 2175 2278 2349 2707 3385 3388 3433 3472 3834
SVW	2592 2921 3100 3133 3542 3856 5445
SWM	0421 0430 0476
SWR	0520 0522 0541 0545 0553 0559 0562 0574 0577 0578 0585 0596 0603 0612 0621 0635 0643 0664 0673 0681 0701 0703 0713 0727 0782 0987 1144
SYA	3853 3872
SYR	0886 0918 1032 1076 1085 1117
TAE	0657 0934 0946 0949 1339 1368 1500 1934 2084 2659
TAI	1066 1334 1598 1625 1952 2282 2301 2339 2434 2444
TAM	1092 1096 1103 1139 1143 1158 1215 1246 1251 1376 1459 1486 1518 1575 1580 1593 1595 1608 1628 1672 1801 1825 1826 1831 1832 1837 1855 1857 1888 2372 2393 2513 2661 2734 2737 2784 2838 2859 2887 2896 2904 2924 3002 3032 3035 3047 3058 3111 3156 3180 3211 3222 3229 3266 3278 3284 3294 3313 3325 3391 3540 3565 3588 3594 3595 3630 3658 3662 3710 3727 3733 3750 3761 3816 3908 3972 4000 4163 4171 4192
TAP	0629 0750 0755 0763 0790 0821 0837 0870 0906 0917 0933 0945 0960 0979 0982 1034 1100 1106 1120 1127 1165 1181 1206 1231 1307 1399 1668 1713 1718 1756 1765 1799 1816 2792 2822 3769 3883 4021 4095 4106 4145
TAR	0119 0123 0124 0205 0370 0390 0402 0511 0869 0880 0958 0975 1187 1479 1700 3096 4344 4689 5204 5474 5610 6338
TBJ	1485
TBZ	0361 0362 0405
TCW	1381 1402 1929 1954 1968
TCX	1006 1238 1250 1881 1887 1921 1972 2060 5603 5872 6038 6056 6114 6122
TGW	2724 2728
THY	1002 1727 2156 2164 2522 2602 2631 2655 2738 2739 2916 2919 3142 3259 3308 3382 3637 3673 3688 3738 3896 3931 3949
TJS	3513 3632 4169
TNA	0606 0731 0746 0791 0822 2376 2914 5055
TVS	2180 4699
TXP	0607 0611 0617

A318/A319/A320/A321

SERVICE BULLETIN

OPERATOR	MSN
UAL	0435 0439 0442 0450 0452 0454 0456 0457 0462 0463 0464 0465 0470 0472 0475 0479 0483 0485 0487 0489 0500 0503 0504 0506 0508 0510 0512 0523 0539 0568 0571 0587 0589 0592 0613 0638 0655 0678 0683 0686 0690 0702 0748 0751 0759 0780 0783 0788 0798 0804 0820 0824 0825 0826 0834 0836 0842 0843 0847 0850 0851 0858 0862 0865 0867 0871 0873 0882 0893 0898 0944 0948 0952 0955 0965 0980 0989 1001 1022 1031 1104 1105 1128 1146 1163 1192 1211 1243 1248 1266 1272 1282 1290 1291 1321 1341 1343 1359 1363 1401 1409 1420 1426 1427 1432 1435 1460 1469 1474 1475 1477 1495 1507 1508 1514 1522 1533 1538 1545 1555 1559 1569 1573 1581 1584 1585 1586 1600 1609 1617 1620 1627 1647 1649 1653 1664 1669 1671 1680 1688 1702 1728 1731 1737 1741 1755 1821 1840 1842 1845 1847 1865
UEA	2654 2696 2762 2774 2820 2835 3024 3706 4347 5003 5252 5957
UJX	0733 1213
UKN	3260
UNA	4583 4732
USA	0053 0054 0055 0064 0065 0066 0077 0081 0448 0565 0584 0762 0803 0844 0856 0861 0863 0866 0868 0889 0890 0896 0904 0922 0924 0929 0931 0953 0972 0997 1003 1019 1033 1038 1040 1043 1046 1049 1050 1051 1052 1055 1056 1061 1064 1065 1069 1075 1079 1083 1088 1095 1097 1109 1110 1111 1112 1114 1116 1122 1134 1135 1141 1148 1166 1178 1182 1196 1203 1205 1223 1224 1234 1245 1254 1264 1265 1268 1269 1274 1275 1281 1284 1287 1289 1294 1297 1298 1301 1310 1311 1313 1314 1315 1317 1319 1323 1326 1328 1331 1340 1342 1348 1350 1354 1358 1360 1369 1371 1373 1375 1378 1382 1389 1391 1393 1395 1397 1403 1406 1410 1412 1417 1419 1425 1431 1436 1442 1447 1455 1462 1463 1465 1472 1481 1490 1492 1496 1499 1517 1519 1521 1525 1527 1531 1534 1536 1539 1547 1552 1563 1565 1576 1621 1643 1644 1651 1666 1701 1704 1710 1724 1764 1792 1844 1935 2193 2302 2312 2405 2422 2430 2458 2482 2570 2595 2613 2615 2630 2669 2690 3584 3629 3633 3712 3740 3796 3858 3879 3881 3924 3928 3944 3960 3977 3989 3993 4025 4041 4050 4082 4086 4107 4123 4134 4149 4202 4242 4843 4847 4850 4885 4893 4898 4932 4935 4940 4957 4960 4966 5235 5244 5269 5282 5292 5300 5317 5332 5368 5374 5409 5422 5444 5475 5504 5513 5588 5594 5644 5659 5684 5696 5728 5751 5763 5795 5800 5899 5939 5980 6027 6035 6100 6133 6152 6175 6181 6194 6214 6230 6236 6249 6255 6264 6337 6387 6420 6427 6443 6479
UTA	5681 5733 5779 5919 5966 6016 6067 6119 6156 6268
VAR	2718
VIM	2732 4270 4305 5158
VIP	4151
VIV	2157 2210 2443 2752 2908
VJC	2712 2745 3646 3739 3791 4049 4190 4193 5295 5742 5822
VKG	1932 1960 6314 6342 6351 6389 6438 6468

A318/A319/A320/A321

SERVICE BULLETIN

OPERATOR	MSN
VLG	0992 1171 1208 1210 1221 1349 1372 1396 1430 1461 1550 1749 1862 1914 1933 1979 2168 2207 2223 2388 2407 2479 2589 2620 2658 2678 2761 2785 2794 2798 2843 2897 2962 2988 3028 3083 3095 3109 3145 3151 3174 3203 3237 3293 3321 3376 3400 3444 3476 3492 3529 3700 3704 3833 3907 3995 4128 4463 4478 4661 4674 4681 4742 4849 4855 4937 5479 5530 5533 5587 5599 5612 5616 5620 5673 5925 6483 6510 6518 6557 6571 6607 6638 6660 6684 6691 6740 6841 6883 6933
VNL	5844 5901 5926
VOI	2997 3524 3543
VRD	2616 2674 2740 2773 2778 2800 2811 2830 2851 2993 3016 3037 3101 3135 3155 3181 3204 3230 3324 3347 3349 3359 3398 3417 3445 3460 3465 3503 3656 3670 3684 3686 4448 4480 4558 4559 4610 4616 4655 4805 4814 4851 4867 4894 4948 4959 4991 4999 5004 5034 5058 5179 5515
VRE	1429
VVC	1306 1370 1454 1686 1757
WGT	1212
WHT	0548 1256 2675
WOW	6210 6232
WRC	0645 0781 1869 2462 2682

(4) Configuration by MSN

MSN	CONFIGURATION
0029 0069 0070 0071 0072 0078 0083 0086 0087 0088 0093 0094 0104 0110 0111 0116 0117 0135 0137 0138 0148 0161 0162 0167 0172 0200 0201 0202 0207 0209 0211 0212 0216 0217 0218 0219 0267 0268 0269 0274 0289 0300 0312 0328 0345 0346 0362 0371 0376 0382 0383 0386 0401 0406 0407 0412 0413 0420 0436 0445 0458 0459 0468 0473 0474 0480 0482 0484 0493 0501 0502 0505 0507 0517 0518 0519 0520 0522 0530 0531 0533 0534 0535 0541 0545 0548 0549 0552 0553 0554 0557 0559 0560 0562 0563 0564 0567 0569 0570 0574 0575 0577 0578 0581 0585 0588 0595 0596 0597 0603 0609 0610 0612 0616 0620 0621 0623 0627 0631 0633 0635 0636 0641 0642 0643 0651 0652 0658 0664 0669 0673 0679 0681 0685 0689 0692 0694 0696 0698 0699 0700 0701 0703 0704 0705 0713 0717 0723 0726 0727 0729 0733 0734 0738 0744 0747 0768 0776 0782 0797 0805 0811 0827 0857 0891 0908 0920 0935 0963 0987 0994 1008 1018 1042 1066 1137 1144 1150 1184 1189 1195 1202 1300 1334 1339 1353 1364 1400 1408 1523 1568 1624 1758 1790 1850 1893 1912 1926 1934 1952 1962 1966 2084 2118 2200 2203 2232 2282 2301 2316 2339 2356 2434 2444 2517 2553 2568 2706 2775 2887 2949	001 002

A318/A319/A320/A321

SERVICE BULLETIN

MSN	CONFIGURATION
0045 0046 0049 0050 0051 0052 0053 0054 0055 0056 0057 0059 0064 0065 0066 0067 0068 0073 0076 0077 0081 0082 0084 0085 0096 0099 0112 0113 0118 0119 0121 0122 0123 0124 0125 0126 0127 0140 0141 0142 0149 0150 0152 0153 0154 0157 0158 0159 0160 0164 0165 0166 0168 0169 0171 0173 0174 0175 0176 0178 0181 0182 0183 0185 0192 0194 0195 0197 0198 0199 0203 0205 0206 0208 0210 0213 0220 0224 0229 0230 0231 0232 0234 0240 0241 0242 0243 0244 0248 0249 0251 0252 0253 0254 0255 0256 0259 0260 0261 0262 0263 0264 0265 0266 0272 0273 0275 0276 0277 0279 0281 0282 0284 0290 0291 0292 0293 0294 0295 0296 0297 0298 0301 0302 0303 0306 0307 0308 0309 0311 0314 0316 0317 0318 0319 0320 0321 0322 0323 0324 0325 0329 0330 0331 0332 0333 0339 0340 0341 0342 0343 0347 0350 0351 0353 0354 0355 0356 0357 0358 0359 0360 0361 0364 0366 0367 0368 0370 0372 0373 0378 0380 0381 0385 0387 0388 0390 0391 0393 0395 0396 0398 0399 0400 0402 0403 0404 0405 0408 0409 0410 0414 0415 0416 0417 0418 0419 0421 0422 0423 0424 0426 0427 0428 0429 0430 0431 0432 0434 0435 0438 0439 0441 0442 0444 0447 0448 0449 0450 0451 0452 0454 0455 0456 0457 0460 0462 0463 0464 0465 0466 0469 0470 0472 0475 0476 0477 0479 0483 0485 0486 0487 0488 0489 0490 0492 0495 0496 0497 0499 0500 0503 0504 0506 0508 0510 0511 0512 0513 0514 0515 0516 0523 0524 0525 0526 0527 0528 0532 0537 0538 0539 0540 0542 0543 0546 0550 0551 0555 0556 0558 0561 0565 0566 0568 0571 0572 0573 0576 0579 0580 0582 0583 0584 0586 0587 0589 0591 0592 0593 0594 0599 0604 0605 0606 0607 0611 0613 0614 0617 0619 0622 0629 0630 0634 0638 0639 0640 0644 0645 0646 0647 0648 0649 0650 0653 0654 0655 0656 0657 0659 0660 0661 0662 0663 0665 0666 0667 0668 0670 0671 0672 0675 0676 0677 0678 0680 0682 0683 0684 0686 0687 0688 0690 0691 0693 0695 0697 0702 0706 0707 0709 0711 0712 0714 0715 0716 0718 0719 0720 0721 0722 0724 0725 0728 0730 0731 0732 0735 0736 0737 0739 0740 0741 0742 0743 0745 0746 0748 0749 0750 0751 0752 0754 0755 0757 0758 0759 0760 0761 0762 0763 0764 0765 0766 0767 0769 0770 0771 0773 0774 0775 0778 0779 0780 0781 0783 0785 0786 0787 0788 0790 0791 0792 0793 0794 0795 0798 0800 0801 0802 0803 0804 0806 0807 0808 0809 0810 0813 0814 0815 0817 0818 0819 0820 0821 0822 0823 0824 0825 0826 0828 0829 0830 0831 0832 0833 0834 0835 0836 0837 0838 0839 0840 0841 0842 0843 0844 0845 0846 0847 0848 0849 0850 0851 0852 0854 0855 0856 0858 0859 0861 0862 0863 0864 0865 0866 0867 0868 0869 0870 0871 0873 0874 0876 0878 0879 0880 0881 0882 0883 0884 0885 0886 0888 0889 0890 0892 0893 0894 0895 0896 0897 0898 0900 0902 0903 0904 0905 0906 0907 0909 0910 0911 0912 0913 0914 0915 0916 0917 0918 0919 0921 0922 0923 0924 0925 0926 0927	002

A318/A319/A320/A321

SERVICE BULLETIN

MSN	CONFIGURATION
0928 0929 0931 0932 0933 0934 0936 0937 0939 0940 0942	002
0943 0944 0945 0946 0947 0948 0949 0950 0951 0952 0953	
0954 0955 0957 0958 0959 0960 0962 0964 0965 0966 0967	
0968 0970 0971 0972 0973 0974 0975 0976 0977 0978 0979	
0980 0981 0982 0983 0984 0986 0988 0989 0990 0991 0992	
0995 0996 0997 0999 1001 1002 1003 1004 1005 1006 1007	
1009 1010 1011 1012 1013 1014 1015 1016 1017 1019 1021	
1022 1023 1026 1027 1029 1031 1032 1033 1034 1035 1037	
1038 1039 1040 1041 1043 1045 1046 1047 1048 1049 1050	
1051 1052 1053 1054 1055 1056 1057 1058 1059 1060 1061	
1062 1063 1064 1065 1067 1068 1069 1071 1072 1075 1076	
1077 1078 1079 1081 1082 1083 1084 1085 1086 1087 1088	
1089 1090 1091 1092 1093 1094 1095 1096 1097 1099 1100	
1101 1102 1103 1104 1105 1106 1108 1109 1110 1111 1112	
1114 1115 1116 1117 1118 1119 1120 1121 1122 1124 1125	
1126 1127 1128 1129 1130 1131 1132 1134 1135 1136 1138	
1139 1140 1141 1142 1143 1145 1146 1147 1148 1149 1152	
1153 1154 1155 1157 1158 1159 1160 1162 1163 1164 1165	
1166 1167 1168 1170 1171 1172 1174 1175 1177 1178 1179	
1180 1181 1182 1183 1187 1191 1192 1193 1194 1196 1197	
1198 1199 1200 1203 1205 1206 1207 1208 1209 1210 1211	
1212 1213 1215 1217 1219 1220 1221 1222 1223 1224 1225	
1226 1229 1230 1231 1232 1233 1234 1236 1237 1238 1239	
1242 1243 1244 1245 1246 1247 1248 1249 1250 1251 1252	
1254 1255 1256 1258 1259 1261 1262 1263 1264 1265 1266	
1268 1269 1272 1274 1275 1276 1277 1279 1281 1282 1283	
1284 1285 1286 1287 1288 1289 1290 1291 1292 1293 1294	
1295 1296 1297 1298 1301 1303 1304 1305 1306 1307 1308	
1310 1311 1313 1314 1315 1316 1317 1318 1319 1320 1321	
1322 1323 1324 1325 1326 1328 1329 1331 1332 1335 1336	
1338 1340 1341 1342 1343 1345 1346 1347 1348 1349 1350	
1351 1354 1355 1356 1358 1359 1360 1362 1363 1366 1368	
1369 1370 1371 1372 1373 1375 1376 1377 1378 1379 1380	
1381 1382 1383 1384 1386 1388 1389 1390 1391 1392 1393	
1394 1395 1396 1397 1399 1401 1402 1403 1406 1407 1409	
1410 1411 1412 1413 1414 1416 1417 1418 1419 1420 1421	
1423 1424 1425 1426 1427 1428 1429 1430 1431 1432 1433	
1434 1435 1436 1437 1438 1439 1440 1442 1443 1445 1447	
1448 1450 1451 1453 1454 1455 1456 1457 1459 1460 1461	
1462 1463 1465 1466 1467 1468 1469 1472 1473 1474 1475	
1477 1479 1480 1481 1482 1483 1484 1485 1486 1487 1488	
1489 1490 1491 1492 1494 1495 1496 1497 1498 1499 1500	
1501 1503 1507 1508 1509 1510 1511 1512 1513 1514 1515	
1516 1517 1518 1519 1520 1521 1522 1525 1526 1527 1529	
1530 1531 1533 1534 1535 1536 1537 1538 1539 1540 1541	
1543 1545 1547 1548 1549 1550 1551 1552 1554 1555 1556	
1558 1559 1560 1562 1563 1565 1566 1567 1569 1570 1571	
1572 1573 1574 1575 1576 1577 1578 1579 1580 1581 1582	
1583 1584 1585 1586 1589 1590 1593 1594 1595 1596 1597	
1598 1599 1600 1601 1603 1604 1605 1606 1607 1608 1609	
1612 1613 1614 1617 1618 1620 1621 1625 1626 1627 1628	

A318/A319/A320/A321

SERVICE BULLETIN

MSN	CONFIGURATION
1630 1631 1633 1634 1635 1636 1637 1641 1643 1644 1646	002
1647 1648 1649 1651 1653 1654 1655 1656 1657 1659 1661	
1662 1663 1664 1665 1666 1668 1669 1670 1671 1672 1673	
1674 1679 1680 1681 1682 1683 1684 1685 1686 1687 1688	
1689 1690 1693 1694 1696 1697 1700 1701 1702 1703 1704	
1706 1707 1708 1709 1710 1711 1713 1714 1715 1716 1717	
1718 1719 1720 1722 1723 1724 1727 1728 1730 1731 1732	
1734 1736 1737 1738 1740 1741 1742 1743 1744 1745 1746	
1747 1749 1750 1751 1752 1753 1754 1755 1756 1757 1759	
1760 1761 1763 1764 1765 1766 1767 1770 1771 1773 1774	
1775 1776 1777 1778 1779 1780 1781 1782 1786 1788 1789	
1792 1793 1794 1795 1796 1799 1800 1801 1803 1804 1805	
1809 1810 1812 1814 1815 1816 1818 1819 1820 1821 1824	
1825 1826 1828 1829 1831 1832 1833 1834 1836 1837 1839	
1840 1841 1842 1843 1844 1845 1846 1847 1851 1853 1854	
1855 1856 1857 1858 1862 1863 1864 1865 1866 1869 1870	
1871 1872 1874 1875 1876 1877 1880 1881 1882 1883 1884	
1886 1887 1888 1889 1890 1892 1895 1897 1899 1901 1902	
1903 1905 1907 1908 1909 1910 1914 1918 1921 1922 1923	
1925 1928 1929 1932 1933 1935 1940 1941 1942 1943 1944	
1945 1946 1947 1950 1954 1955 1957 1958 1959 1960 1961	
1963 1965 1968 1969 1970 1971 1972 1974 1976 1979 1980	
1982 1986 1987 1988 1990 1993 1995 1996 1997 1998 1999	
2002 2003 2004 2008 2010 2011 2012 2013 2016 2018 2019	
2023 2026 2027 2028 2029 2030 2032 2033 2038 2039 2040	
2041 2045 2046 2047 2048 2052 2057 2060 2064 2066 2067	
2069 2070 2072 2073 2074 2076 2077 2078 2079 2080 2082	
2083 2086 2087 2088 2089 2091 2092 2093 2094 2095 2096	
2097 2098 2101 2102 2103 2104 2105 2106 2107 2108 2110	
2113 2114 2115 2116 2117 2121 2122 2123 2126 2127 2133	
2135 2137 2138 2139 2142 2143 2144 2145 2151 2156 2157	
2158 2161 2162 2163 2164 2165 2166 2167 2168 2169 2175	
2179 2180 2183 2185 2186 2188 2189 2190 2191 2192 2193	
2194 2195 2197 2198 2206 2207 2209 2210 2211 2216 2217	
2220 2222 2223 2225 2226 2227 2233 2234 2236 2240 2241	
2242 2243 2247 2248 2250 2253 2254 2255 2256 2258 2260	
2261 2263 2264 2267 2270 2272 2278 2287 2288 2290 2291	
2294 2295 2302 2303 2304 2305 2306 2310 2311 2312 2313	
2318 2320 2321 2323 2324 2328 2330 2331 2332 2333 2337	
2340 2341 2342 2346 2347 2348 2349 2351 2357 2358 2359	
2363 2364 2365 2366 2367 2369 2372 2373 2374 2376 2377	
2381 2382 2388 2389 2390 2391 2392 2393 2394 2397 2399	
2400 2405 2406 2407 2409 2410 2411 2413 2417 2419 2421	
2422 2425 2429 2430 2432 2433 2439 2441 2443 2448 2458	
2459 2462 2464 2465 2466 2470 2472 2473 2474 2476 2479	
2480 2482 2483 2485 2486 2487 2488 2490 2496 2497 2502	
2507 2509 2510 2513 2516 2518 2521 2522 2523 2524 2529	
2530 2531 2534 2536 2539 2540 2542 2544 2550 2552 2556	
2560 2563 2564 2566 2567 2569 2570 2571 2572 2575 2576	
2583 2584 2585 2586 2588 2589 2590 2592 2593 2595 2596	
2597 2598 2599 2602 2603 2607 2612 2613 2615 2616 2618	

A318/A319/A320/A321

SERVICE BULLETIN

MSN	CONFIGURATION
2619 2620 2621 2622 2623 2624 2625 2628 2629 2630 2631	002
2632 2633 2634 2635 2638 2639 2641 2645 2648 2649 2650	
2653 2654 2655 2656 2658 2659 2660 2661 2662 2664 2665	
2668 2669 2670 2673 2674 2675 2676 2678 2679 2682 2683	
2685 2688 2690 2692 2694 2695 2696 2697 2698 2699 2700	
2704 2707 2711 2712 2713 2718 2719 2720 2723 2724 2726	
2728 2730 2731 2732 2734 2736 2737 2738 2739 2740 2741	
2745 2747 2748 2749 2751 2752 2753 2756 2758 2759 2760	
2761 2762 2763 2764 2767 2768 2773 2774 2776 2778 2783	
2784 2785 2786 2788 2789 2790 2792 2793 2794 2797 2798	
2799 2800 2801 2806 2807 2808 2809 2810 2811 2813 2816	
2817 2820 2821 2822 2826 2828 2830 2831 2833 2835 2836	
2837 2838 2840 2842 2843 2844 2845 2846 2851 2852 2853	
2856 2857 2858 2859 2863 2864 2865 2867 2869 2870 2872	
2874 2875 2876 2879 2881 2883 2885 2886 2889 2892 2893	
2894 2896 2897 2898 2902 2903 2904 2907 2908 2910 2911	
2912 2913 2914 2916 2919 2920 2921 2922 2924 2926 2927	
2929 2930 2931 2932 2933 2936 2937 2939 2942 2943 2944	
2947 2953 2955 2956 2957 2958 2962 2963 2964 2965 2966	
2968 2971 2974 2975 2976 2978 2981 2983 2987 2988 2989	
2990 2991 2993 2994 2995 2996 2997 3000 3001 3002 3004	
3005 3006 3007 3011 3012 3013 3014 3016 3017 3018 3019	
3021 3022 3023 3024 3025 3026 3027 3028 3030 3031 3032	
3033 3034 3035 3037 3040 3043 3044 3047 3048 3049 3050	
3052 3054 3055 3056 3058 3060 3062 3063 3064 3066 3067	
3068 3070 3071 3073 3074 3075 3076 3078 3079 3080 3081	
3083 3085 3086 3089 3093 3094 3095 3096 3097 3100 3101	
3102 3104 3105 3106 3109 3111 3112 3114 3115 3116 3117	
3120 3121 3123 3124 3128 3129 3130 3133 3135 3136 3139	
3140 3141 3142 3145 3146 3149 3151 3152 3154 3155 3156	
3157 3158 3159 3160 3162 3164 3165 3167 3169 3171 3172	
3173 3174 3178 3179 3180 3181 3182 3183 3188 3191 3192	
3193 3194 3196 3198 3199 3201 3202 3203 3204 3209 3210	
3211 3212 3213 3214 3215 3216 3218 3219 3220 3221 3222	
3223 3224 3225 3227 3229 3230 3232 3234 3235 3236 3237	
3238 3240 3242 3243 3244 3245 3246 3252 3254 3255 3259	
3260 3261 3264 3266 3267 3268 3270 3271 3272 3274 3277	
3278 3280 3281 3282 3284 3286 3288 3289 3290 3291 3293	
3294 3295 3297 3298 3299 3300 3301 3302 3304 3305 3308	
3309 3312 3313 3314 3315 3316 3317 3318 3319 3320 3321	
3322 3323 3324 3325 3326 3327 3328 3330 3331 3333 3334	
3335 3336 3337 3338 3340 3343 3344 3345 3346 3347 3349	
3351 3352 3353 3355 3356 3357 3358 3359 3361 3362 3363	
3364 3365 3367 3368 3369 3370 3371 3373 3374 3375 3376	
3377 3379 3380 3382 3385 3386 3388 3389 3390 3391 3392	
3393 3394 3395 3396 3397 3398 3400 3402 3403 3404 3406	
3407 3410 3412 3414 3415 3417 3421 3422 3423 3424 3425	
3427 3428 3431 3433 3436 3437 3438 3439 3443 3444 3445	
3446 3447 3448 3449 3452 3453 3454 3457 3458 3460 3461	
3462 3464 3465 3468 3469 3472 3473 3475 3476 3477 3478	
3480 3482 3483 3484 3485 3486 3487 3489 3490 3492 3494	

A318/A319/A320/A321

SERVICE BULLETIN

MSN	CONFIGURATION
3496 3497 3498 3499 3500 3501 3502 3503 3504 3505 3506 3508 3509 3511 3512 3513 3514 3515 3516 3519 3521 3522 3524 3526 3527 3529 3530 3532 3533 3534 3535 3536 3540 3541 3542 3543 3545 3546 3549 3550 3551 3556 3557 3560 3563 3564 3565 3568 3573 3574 3575 3576 3582 3583 3584 3585 3586 3588 3589 3591 3594 3595 3596 3598 3600 3601 3602 3604 3605 3606 3607 3609 3610 3614 3615 3617 3618 3619 3620 3621 3626 3627 3628 3629 3630 3631 3632 3633 3635 3636 3637 3640 3641 3642 3643 3644 3646 3648 3649 3651 3656 3657 3658 3660 3661 3662 3663 3666 3667 3669 3670 3671 3673 3676 3679 3680 3684 3685 3686 3687 3688 3689 3690 3694 3695 3697 3699 3700 3701 3703 3704 3706 3708 3709 3710 3711 3712 3714 3715 3717 3721 3723 3726 3727 3728 3729 3730 3732 3733 3737 3738 3739 3740 3744 3745 3748 3749 3750 3751 3752 3753 3755 3758 3759 3761 3762 3765 3767 3769 3770 3772 3773 3776 3778 3779 3780 3781 3782 3785 3786 3787 3789 3790 3791 3792 3794 3796 3802 3803 3809 3812 3813 3815 3816 3817 3818 3820 3822 3823 3826 3829 3830 3831 3832 3833 3834 3835 3838 3839 3840 3841 3846 3850 3853 3856 3857 3858 3861 3862 3863 3865 3866 3868 3872 3873 3874 3875 3878 3879 3880 3881 3882 3883 3885 3886 3889 3891 3892 3893 3894 3895 3896 3905 3906 3907 3908 3911 3912 3918 3919 3921 3923 3924 3925 3926 3928 3931 3932 3933 3939 3942 3943 3944 3945 3949 3950 3952 3954 3955 3956 3957 3960 3962 3963 3964 3966 3967 3970 3972 3974 3976 3977 3978 3984 3985 3989 3993 3994 3995 3996 3997 3998 4000 4002 4004 4007 4008 4009 4013 4018 4019 4020 4021 4024 4025 4029 4030 4032 4033 4035 4039 4041 4049 4050 4052 4055 4058 4059 4061 4064 4068 4070 4074 4075 4078 4079 4082 4083 4086 4088 4089 4095 4096 4098 4099 4101 4102 4103 4106 4107 4108 4110 4112 4113 4114 4116 4117 4119 4121 4123 4126 4127 4128 4130 4133 4134 4136 4138 4142 4143 4145 4146 4147 4148 4149 4150 4151 4152 4154 4155 4156 4158 4160 4161 4162 4163 4164 4165 4166 4169 4170 4171 4185 4187 4188 4190 4192 4193 4195 4197 4199 4201 4202 4203 4204 4207 4211 4212 4213 4216 4218 4227 4231 4235 4236 4237 4238 4242 4243 4249 4253 4254 4255 4256 4263 4265 4269 4270 4272 4275 4276 4277 4278 4280 4282 4285 4288 4291 4293 4294 4301 4302 4304 4305 4306 4307 4310 4311 4312 4315 4316 4326 4328 4329 4333 4334 4344 4346 4347 4353 4354 4361 4367 4368 4378 4384 4386 4388 4390 4401 4404 4411 4413 4420 4424 4426 4428 4429 4433 4448 4458 4462 4463 4464 4468 4470 4477 4478 4480 4481 4486 4488 4489 4502 4503 4506 4510 4518 4520 4521 4523 4524 4525 4535 4536 4539 4541 4551 4552 4555 4557 4558 4559 4562 4565 4568 4571 4572 4573 4575 4581 4582 4583 4587 4594 4596 4600 4603 4606 4609 4610 4611 4614 4616 4619 4622 4623 4630 4631 4634 4637 4639 4641 4642 4648 4650 4652 4653 4655 4658 4661 4663 4668 4670 4674 4678 4679 4681 4688 4689 4690 4691 4694 4699 4704 4715 4720 4725 4727 4728 4730	002

MSN	CONFIGURATION
4731 4732 4733 4735 4742 4743 4745 4752 4757 4759 4762 4764 4768 4780 4791 4793 4795 4797 4805 4806 4807 4814 4817 4824 4827 4833 4840 4842 4843 4847 4848 4849 4850 4851 4853 4855 4856 4859 4860 4861 4865 4867 4869 4870 4875 4878 4882 4885 4889 4890 4893 4894 4898 4905 4910 4915 4917 4924 4932 4933 4935 4937 4940 4948 4956 4957 4958 4959 4960 4961 4964 4966 4969 4975 4979 4980 4981 4988 4989 4990 4991 4992 4998 4999 5001 5003 5004 5011 5013 5017 5018 5024 5025 5026 5030 5031 5033 5034 5035 5038 5040 5043 5055 5058 5070 5071 5074 5079 5085 5086 5096 5098 5099 5102 5106 5115 5126 5128 5130 5131 5133 5134 5137 5143 5149 5153 5158 5163 5165 5167 5169 5171 5173 5175 5177 5179 5180 5191 5200 5204 5206 5215 5221 5226 5235 5244 5246 5252 5257 5261 5269 5272 5276 5282 5283 5287 5290 5292 5294 5295 5300 5307 5317 5321 5325 5329 5332 5336 5339 5344 5347 5350 5353 5357 5358 5359 5366 5367 5368 5372 5374 5382 5383 5393 5397 5400 5401 5404 5409 5414 5420 5422 5423 5424 5428 5430 5431 5444 5445 5448 5452 5455 5457 5462 5464 5467 5468 5474 5475 5478 5479 5486 5491 5500 5501 5502 5504 5505 5512 5513 5515 5522 5526 5530 5533 5535 5538 5547 5559 5569 5570 5576 5581 5582 5587 5588 5590 5593 5594 5599 5603 5606 5607 5610 5612 5613 5616 5619 5620 5625 5627 5634 5636 5642 5644 5648 5652 5653 5657 5659 5665 5673 5674 5681 5684 5692 5696 5703 5706 5718 5728 5729 5733 5734 5737 5742 5751 5762 5763 5767 5768 5772 5773 5774 5779 5784 5792 5795 5800 5812 5815 5822 5824 5833 5839 5843 5844 5846 5851 5856 5862 5863 5866 5867 5870 5872 5876 5878 5887 5888 5889 5891 5897 5899 5901 5903 5905 5906 5908 5914 5918 5919 5925 5926 5931 5933 5939 5941 5943 5948 5966 5969	002
0189 0190	001
5957 5968 5978 5980 5985 6016 6027 6028 6029 6035 6037 6038 6053 6056 6059 6066 6067 6091 6100 6114 6119 6122 6126 6129 6133 6152 6155 6156 6168 6171 6172 6175 6181 6194 6210 6214 6221 6230 6232 6236 6249 6255 6264 6268 6290 6299 6314 6315 6337 6338 6342 6351 6376 6387 6389 6392 6395 6420 6427 6432 6433 6435 6438 6443 6446 6454 6459 6468 6477 6479 6483 6501 6510 6518 6542 6557 6571 6607 6638 6660 6684 6691 6740 6841 6883 6933	003

(5) Configuration definition

****CONF 001**

Config. 001 is valid for aircraft on which:

- MOD No. 35894P9384 (Service Bulletin No. A320-34-1354) is not embodied and
- MOD No. 155737P14215 is not embodied.

****CONF 002**

Config. 002 is valid for aircraft on which:

- MOD No. 35894P9384 (Service Bulletin No. A320-34-1354) is embodied and

A318/A319/A320/A321

SERVICE BULLETIN

- MOD No. 155737P14215 is not embodied.

****CONF 003**

Config. 003 is valid for aircraft on which:

- MOD No. 35894P9384 (Service Bulletin No. A320-34-1354) and
- MOD No. 155737P14215 are embodied.

The following table gives information of the Configuration Definition

Configuration definition Table				
MOD.	SB	C01	C02	C03
35894P9384	34-1354		X	X
155737P14215				X

For the retrofitted modifications after accomplishment of this Service Bulletin, refer to Appendix 02 - Retrofitted Modifications .

(6) Material Effectivity

****CONF 001**

MATERIAL	QTY PER A/C	SEE NOTES
Equipment BFEA01	1	

****CONF 002 thru 003**

MATERIAL	QTY PER A/C	SEE NOTES
Equipment BFEA02	1	

****CONF ALL**

B. CONCURRENT REQUIREMENTS

****CONF 001 thru 002**

Accomplishment of this Service Bulletin requires the prior or simultaneous accomplishment of the following Service Bulletin(s):

Service Bulletin No. A320-34-1127

NOTE: Service Bulletin No. A320-34-1127 (NAVIGATION - AIR DATA - INSTALL SEXTANT PITOT PROBE PN C16195AA) applies MOD No. 25998P4400.

****CONF 003**

None

****CONF ALL**

C. REASON

(1) History

As described in Airworthiness Directive No. 2014-0237, the European Safety Agency (EASA) requires the removal of all THALES Pitot probes PN C16195AA or PN C16195BA from A320 family aircraft as a precautionary measure.

(2) Objective/Action

This Service Bulletin replaces the existing Pitot probes by UTAS Pitot probe PN 0851HL.

(3) Advantages

Application of this Service Bulletin will provide compliance to EASA Airworthiness Directive No. 2014-0237.

(4) Operational/Maintenance Consequences

None

D. DESCRIPTION

To accomplish this Service Bulletin it is necessary to :

****CONF 001**

Task 341170-831-801-001: Modification

(1) Replace the three pitot probes (FINs 9DA1, 9DA2 and 9DA3)

****CONF 002**

Task 341170-831-801-001: Modification

(1) Replace the three pitot probes (FINs 9DA1, 9DA2 and 9DA3)

****CONF 003**

Task 341170-831-801-001: Modification

(1) Replace the three pitot probes (FINs 9DA1, 9DA2 and 9DA3)

****CONF ALL**

E. COMPLIANCE

(1) Classification

MANDATORY: Service Bulletin must be accomplished.

(2) Accomplishment Timescale

This Service Bulletin has been classified Mandatory by the issue of an Airworthiness Directive (AD) published by the European Aviation Safety Agency (EASA). The AD must be used as the reference document for the mandated accomplishment timescale.

F. APPROVAL

The technical content of this document is approved under the authority of Design Organisation Approval No. EASA.21J.031.

If an aircraft listed in the effectivity has a modification or repair embodied that is not of AIRBUS origin, and which affects the content of this Service Bulletin, the operator is responsible for obtaining approval by its airworthiness authority for any adaptation necessary before incorporation of the Service Bulletin.

G. MANPOWER

The manpower estimates given in this Service Bulletin are based on the direct labor cost to do the work. These estimates assume that the work will be done by experienced personnel, and may need to be revised upwards to suit operator's circumstances. The estimates do not include the time to prepare, plan or inspect the work. Manufacture and procurement of parts and tools, drying times for paints, sealants, etc., and general administration work are also not included.

**CONF 001

Task 341170-831-801-001: Modification	
Get Access	1.00
On Aircraft	
Replace the three pitot probes (FINs 9DA1, 9DA2 and 9DA3)	2.00
Tests	0.50
Close-Up	1.00
TOTAL MANHOURS	4.50
ELAPSED TIME (HOURS)	2.50

NOTE: For an explanation of the manhours and elapsed time, refer to the Gantt Chart, [Fig. A-FAAAA](#) given in Appendix 01 - Elapsed Time Assumption .

**CONF 002

Task 341170-831-801-001: Modification	
Get Access	1.00
On Aircraft	
Replace the three pitot probes (FINs 9DA1, 9DA2 and 9DA3)	2.00
Tests	0.50
Close-Up	1.00
TOTAL MANHOURS	4.50
ELAPSED TIME (HOURS)	2.50

A318/A319/A320/A321

SERVICE BULLETIN

NOTE: For an explanation of the manhours and elapsed time, refer to the Gantt Chart, [Fig. A-FAAAA](#) given in Appendix 01 - Elapsed Time Assumption .

****CONF 003**

Task 341170-831-801-001: Modification	
Get Access	1.00
On Aircraft	
Replace the three pitot probes (FINs 9DA1, 9DA2 and 9DA3)	2.00
Tests	0.50
Close-Up	1.00
TOTAL MANHOURS	4.50
ELAPSED TIME (HOURS)	2.50

NOTE: For an explanation of the manhours and elapsed time, refer to the Gantt Chart, [Fig. A-FAAAA](#) given in Appendix 01 - Elapsed Time Assumption .

****CONF ALL**

H. WEIGHT AND BALANCE

Not Changed

I. ELECTRICAL LOAD DATA

Not Changed

J. REFERENCES

****CONF 001**

Airworthiness Directive (AD)	Airworthiness Directive No. 2014-0237
Aircraft Maintenance Manual (AMM)	06-20-00 06-31-53 06-41-53 12-34-24 34-11-15
ATA Common Support Data Dictionary (CSDD), Chapter 2	
Elec. Std. Practices Manual (ESPM)	20-55-00
Service Bulletin (SB)	A320-34-1127

****CONF 002**

Airworthiness Directive (AD)	Airworthiness Directive No. 2014-0237
Aircraft Maintenance Manual (AMM)	06-20-00 06-31-53 06-41-53 12-34-24 34-11-15
ATA Common Support Data Dictionary (CSDD), Chapter 2	
Elec. Std. Practices Manual (ESPM)	20-55-00
Service Bulletin (SB)	A320-34-1127

5 DATE: Dec 18/98

SERVICE BULLETIN No.: A320-34-1170

REVISION No.: 30 - Jun 18/15

Page: 25

A318/A319/A320/A321

SERVICE BULLETIN

****CONF 003**

Airworthiness Directive (AD)	Airworthiness Directive No. 2014-0237
Aircraft Maintenance Manual (AMM)	06-20-00 06-31-53 06-41-53 12-34-24 34-11-15
ATA Common Support Data Dictionary (CSDD), Chapter 2	
Elec. Std. Practices Manual (ESPM)	20-55-00

****CONF ALL**

K. PUBLICATION AFFECTED

Aircraft Maintenance Manual (AMM)	30-31-00 34-10-00 34-11-15 34-13-00 34-21-00 34-22-25
Aircraft Wiring List (AWL)	
Illustrated Parts Catalog (IPC)	34-11-01 34-11-15
Trouble Shooting Manual (TSM)	30-31-00

L. INTERCHANGEABILITY/MIXABILITY

The interchangeability/mixability possibilities are for new or modified parts introduced by the accomplishment of this Service Bulletin.

****CONF 001**

DESCRIPTION	OLD PART N°	NEW PART N°	INT	MIXABILITY	SEE NOTES
Pitot Probe	C16195AA	0851HL	03	NO	

NOTE: For definitions of interchangeability codes in column INT., refer to ATA Common Support Data Dictionary (CSDD), Chapter 2.

NOTE: Only the mixability configuration(s) and condition(s) stated in this Service Bulletin are approved.

****CONF 002**

DESCRIPTION	OLD PART N°	NEW PART N°	INT	MIXABILITY	SEE NOTES
Pitot Probe	C16195BA	0851HL	03	NO	

NOTE: For definitions of interchangeability codes in column INT., refer to ATA Common Support Data Dictionary (CSDD), Chapter 2.

NOTE: Only the mixability configuration(s) and condition(s) stated in this Service Bulletin are approved.

A318/A319/A320/A321

SERVICE BULLETIN

****CONF 003**

DESCRIPTION	OLD PART N°	NEW PART N°	INT	MIXABILITY	SEE NOTES
Pitot Probe	C16195BA	0851HL	03	NO	

NOTE: For definitions of interchangeability codes in column INT., refer to ATA Common Support Data Dictionary (CSDD), Chapter 2.

NOTE: Only the mixability configuration(s) and condition(s) stated in this Service Bulletin are approved.

****CONF ALL**

M. SPARES

Pitot Probe	C16195AA
Pitot Probe	C16195BA

A318/A319/A320/A321

SERVICE BULLETIN

This Page Intentionally Left Blank

2. MATERIAL INFORMATION

****CONF ALL**

A. MATERIAL - PRICE AND AVAILABILITY

(1) Procurement Addresses

Vendor parts to be procured from:

Equipment BFEA01 Equipment BFEA02	ROSEMOUNT AEROSPACE INC DIV GOODRICH SENSOR SYSTEMS 1256 TRAPP ROAD EAGAN USA
--------------------------------------	--

(2) Price and Availability

From equipment BFEA01 to equipment BFA02

No AIRBUS kit will be provided.

Procurement terms for the equipment must be negotiated with the equipment supplier.

B. INDUSTRY SUPPORT INFORMATION

From equipment BFEA01 to equipment BFA02

This Service Bulletin is the subject of an AIRBUS monitored retrofit campaign.

Industry support terms for the equipment must be negotiated with the equipment supplier.

For the organization of this retrofit, you are kindly requested to contact AIRBUS retrofit management department.

AIRBUS
CUSTOMER SERVICES DIRECTORATE
1 Rond Point Maurice Bellonte
31707 BLAGNAC CEDEX
France
Tel : (33) 5 67 19 06 22
E-mail : monitored.retrofit@airbus.com
Fax : (33) 5 61 93 27 45

C. LIST OF COMPONENTS

No Kit

D. LIST OF MATERIALS - OPERATOR SUPPLIED

(1) Consumable Materials

None

A318/A319/A320/A321

SERVICE BULLETIN

(2) Components

NOTE: To accomplish this Service Bulletin it is necessary to use the expendable parts listed in the subsequent referenced AMM task:

- AMM Task 34-11-15-400-001

(3) Equipment

Equipment BFEA01

ITEM	NEW PART N°	QTY (UM)	KEYWORD	ITEM	OLD PART N°	INT	SEE NOTES
	0851HL	3	PROBE		C16195AA	03	

NOTE: For definitions of interchangeability codes in column INT., refer to ATA Common Support Data Dictionary (CSDD), Chapter 2.

NOTE: The above list of components is not an AIRBUS Kit, the required parts shall be ordered as necessary through the given channel.

Equipment BFEA02

ITEM	NEW PART N°	QTY (UM)	KEYWORD	ITEM	OLD PART N°	INT	SEE NOTES
	0851HL	3	PROBE		C16195BA	03	

NOTE: For definitions of interchangeability codes in column INT., refer to ATA Common Support Data Dictionary (CSDD), Chapter 2.

NOTE: The above list of components is not an AIRBUS Kit, the required parts shall be ordered as necessary through the given channel.

E. PARTS TO BE RE-IDENTIFIED BY OPERATOR

None

F. TOOLING

None

3. ACCOMPLISHMENT INSTRUCTIONS

Task 341170-831-801-001 - Modification

WARNING: MAKE SURE THAT YOU OBEY ALL THE WARNINGS AND ALL THE CAUTIONS INCLUDED IN THE REFERENCED PROCEDURES.

CAUTION: ALWAYS OBEY THE PRECAUTIONS THAT FOLLOW TO KEEP ELECTRICAL WIRING IN A SATISFACTORY CONDITION (ELECTRICALLY AND MECHANICALLY SERVICEABLE). WHEN YOU DO MAINTENANCE WORK, REPAIRS OR MODIFICATIONS, ALWAYS KEEP ELECTRICAL WIRING, COMPONENTS AND THE WORK AREA AS CLEAN AS POSSIBLE. TO DO THIS:

- PUT PROTECTION, SUCH AS PLASTIC SHEETING, CLOTHS, ETC. AS NECESSARY ON WIRING AND COMPONENTS.
- REGULARLY REMOVE ALL SHAVINGS, UNWANTED MATERIAL AND OTHER CONTAMINATION.

THESE PRECAUTIONS WILL DECREASE THE RISK OF CONTAMINATION AND DAMAGE TO THE ELECTRICAL WIRING INSTALLATION.

IF THERE IS CONTAMINATION, REFER TO ESPM 20-55-00.

NOTE: The accomplishment instructions of this Service Bulletin include procedures given in other documents or in other sections of the Service Bulletin. When the words 'refer to' are used and the operator has a procedure accepted by the local authority he belongs to, the accepted alternative procedure can be used. When the words 'in accordance with' are used then the given procedure must be followed.

NOTE: The access and close-up instructions, not comprising return to service tests, in this Service Bulletin do not constitute or affect the technical intent of the Service Bulletin. Operators can therefore, as deemed necessary, omit or add access and/or close-up steps to add flexibility to their maintenance operations as long as the technical intent of the Service Bulletin is met within the set parameters.

NOTE: Manual titles given in the accomplishment instructions are referred to by acronyms. Refer to paragraph 1.J., References, for the definition of acronyms.

NOTE: This Service Bulletin is classified mandatory or expected to be classified mandatory by an Airworthiness Directive (AD). The paragraphs 3.C. and 3.D. in these accomplishment instructions are Required for Compliance (RC) and must be done to comply with the AD. Other paragraphs are recommended and may be deviated from, done as part of other actions or done with accepted methods different from those given in the Service Bulletin, as long as the RC paragraphs can be done and the aircraft can be put back into a serviceable condition.

Task Associated Data

**CONF 001

Zone	
125 126	
Modified FIN	
9DA1 9DA2 9DA3	
Access	
Door	812 822
Manpower	
TOTAL MANHOURS	4.50
ELAPSED TIME (HOURS)	2.50

**CONF 002

Zone	
125 126	
Modified FIN	
9DA1 9DA2 9DA3	
Access	
Door	812 822
Manpower	
TOTAL MANHOURS	4.50
ELAPSED TIME (HOURS)	2.50

**CONF 003

Zone	
125 126	
Modified FIN	
9DA1 9DA2 9DA3	
Access	
Door	812 822
Manpower	
TOTAL MANHOURS	4.50
ELAPSED TIME (HOURS)	2.50

**CONF ALL

A. GENERAL

**CONF 001

(1) Subtask 341170-910-002-001 - Standard Practices

Manpower Resources	
Skills	NON SPECIFIC

A318/A319/A320/A321

SERVICE BULLETIN

References	
Aircraft Maintenance Manual (AMM)	06-20-00, Page Block 001 06-31-53, Page Block 001 06-41-53, Page Block 001

- (a) For the Frame (FR) identification, refer to AMM 06-31-53, Page Block 001.
- (b) For the identification of zones, refer to AMM 06-20-00, Page Block 001.
- (c) For the identification of access panels, refer to AMM 06-41-53, Page Block 001.

(2) Subtask 341170-839-001-001 - Administrative

Manpower Resources	
Skills	NON SPECIFIC

Write in the applicable aircraft records that you have done all the work given in this Service Bulletin.

**CONF 002

(1) Subtask 341170-910-002-001 - Standard Practices

Manpower Resources	
Skills	NON SPECIFIC

References	
Aircraft Maintenance Manual (AMM)	06-20-00, Page Block 001 06-31-53, Page Block 001 06-41-53, Page Block 001

- (a) For the Frame (FR) identification, refer to AMM 06-31-53, Page Block 001.
- (b) For the identification of zones, refer to AMM 06-20-00, Page Block 001.
- (c) For the identification of access panels, refer to AMM 06-41-53, Page Block 001.

(2) Subtask 341170-839-001-001 - Administrative

Manpower Resources	
Skills	NON SPECIFIC

Write in the applicable aircraft records that you have done all the work given in this Service Bulletin.

**CONF 003

(1) Subtask 341170-910-002-001 - Standard Practices

Manpower Resources	
Skills	NON SPECIFIC

References	
Aircraft Maintenance Manual (AMM)	06-20-00, Page Block 001 06-31-53, Page Block 001 06-41-53, Page Block 001

- (a) For the Frame (FR) identification, refer to AMM 06-31-53, Page Block 001.
- (b) For the identification of zones, refer to AMM 06-20-00, Page Block 001.
- (c) For the identification of access panels, refer to AMM 06-41-53, Page Block 001.

(2) Subtask 341170-839-001-001 - Administrative

Manpower Resources	
Skills	NON SPECIFIC

Write in the applicable aircraft records that you have done all the work given in this Service Bulletin.

****CONF ALL**

B. PREPARATION

****CONF 001**

(1) Subtask 341170-941-001-001 - Job Set-up

Manpower Resources	
Skills	NON SPECIFIC

References	
Aircraft Maintenance Manual (AMM)	Task 12-34-24-869-002 Task 34-11-15-000-001

NOTE: The items given in this note shall be considered as the basic Aircraft configuration before you start a maintenance task:

- Aircraft on the ground resting on landing gear (the ground safety locks and the wheel chocks are in position on the landing gear).
- Engine shut down, thrust reversers closed and locked
- Aircraft in clean configuration
- Parking brake applied
- Aircraft electrical network de-energized
- Hydraulic systems depressurized
- Access to the cockpit and cabin is available
- All circuit breakers are in closed position

A318/A319/A320/A321

SERVICE BULLETIN

- All controls in NORM, AUTO or OFF position.
- (a) Make sure that the aircraft is electrically grounded, refer to AMM Task 12-34-24-869-002.
- (b) Do the Job Set-up procedure as specified in the removal of the three pitot probes (FINs 9DA1, 9DA2 and 9DA3), refer to AMM Task 34-11-15-000-001.

****CONF 002**

(1) Subtask 341170-941-001-001 - Job Set-up

Manpower Resources	
Skills	NON SPECIFIC

References	
Aircraft Maintenance Manual (AMM)	Task 12-34-24-869-002 Task 34-11-15-000-001

NOTE: The items given in this note shall be considered as the basic Aircraft configuration before you start a maintenance task:

- Aircraft on the ground resting on landing gear (the ground safety locks and the wheel chocks are in position on the landing gear).
 - Engine shut down, thrust reversers closed and locked
 - Aircraft in clean configuration
 - Parking brake applied
 - Aircraft electrical network de-energized
 - Hydraulic systems depressurized
 - Access to the cockpit and cabin is available
 - All circuit breakers are in closed position
 - All controls in NORM, AUTO or OFF position.
- (a) Make sure that the aircraft is electrically grounded, refer to AMM Task 12-34-24-869-002.
 - (b) Do the Job Set-up procedure as specified in the removal of the three pitot probes (FINs 9DA1, 9DA2 and 9DA3), refer to AMM Task 34-11-15-000-001.

****CONF 003**

(1) Subtask 341170-941-001-001 - Job Set-up

Manpower Resources	
Skills	NON SPECIFIC

References	
Aircraft Maintenance Manual (AMM)	Task 12-34-24-869-002 Task 34-11-15-000-001

NOTE: The items given in this note shall be considered as the basic Aircraft configuration before you start a maintenance task:

- Aircraft on the ground resting on landing gear (the ground safety locks and the wheel chocks are in position on the landing gear).
- Engine shut down, thrust reversers closed and locked
- Aircraft in clean configuration
- Parking brake applied
- Aircraft electrical network de-energized
- Hydraulic systems depressurized
- Access to the cockpit and cabin is available
- All circuit breakers are in closed position
- All controls in NORM, AUTO or OFF position.

(a) Make sure that the aircraft is electrically grounded, refer to AMM Task 12-34-24-869-002.

(b) Do the Job Set-up procedure as specified in the removal of the three pitot probes (FINs 9DA1, 9DA2 and 9DA3), refer to AMM Task 34-11-15-000-001.

****CONF ALL**

C. PROCEDURE

****CONF 001**

- (1) **Subtask 341170-831-001-001 - Replace the three pitot probes (FINs 9DA1, 9DA2 and 9DA3)**

Work Zones and Access Panels			
	Zone	Access/Work location	
	125	Access	Door 812
	126	Access	Door 822

Manpower Resources	
Manhours	2.00
Minimum number of person	2
Subtask elapsed time	1.00
Skills	AIRFRAME

A318/A319/A320/A321

SERVICE BULLETIN

Material necessary to do the job

Equipment BFEA01				
ITEM	NEW PART N°	QTY (UM)	KEYWORD	SEE NOTES
	0851HL	3	PROBE	

NOTE: The above list of components is not an AIRBUS Kit, the required parts shall be ordered as necessary through the given channel.

References	
Aircraft Maintenance Manual (AMM)	Task 34-11-15-000-001 Task 34-11-15-400-001

(a) Remove:

Refer to AMM Task 34-11-15-000-001

FIN 9DA1

1 Pitot Probe C16195AA

and

FIN 9DA2

1 Pitot Probe C16195AA

and

FIN 9DA3

1 Pitot Probe C16195AA

(b) Install:

Refer to AMM Task 34-11-15-400-001

FIN 9DA1

1 Pitot Probe 0851HL

and

FIN 9DA2

1 Pitot Probe 0851HL

and

FIN 9DA3

1 Pitot Probe 0851HL

A318/A319/A320/A321

SERVICE BULLETIN

****CONF 002**

- (1) **Subtask 341170-831-001-002 - Replace the three pitot probes (FINs 9DA1, 9DA2 and 9DA3)**

Work Zones and Access Panels			
	Zone	Access/Work location	
	125	Access	Door 812
	126	Access	Door 822

Manpower Resources	
Manhours	2.00
Minimum number of person	2
Subtask elapsed time	1.00
Skills	AIRFRAME

Material necessary to do the job

Equipment BFEA02				
ITEM	NEW PART N°	QTY (UM)	KEYWORD	SEE NOTES
	0851HL	3	PROBE	

NOTE: The above list of components is not an AIRBUS Kit, the required parts shall be ordered as necessary through the given channel.

References	
Aircraft Maintenance Manual (AMM)	Task 34-11-15-000-001 Task 34-11-15-400-001

- (a) Remove:

Refer to AMM Task 34-11-15-000-001

FIN 9DA1

1 Pitot Probe C16195BA

and

FIN 9DA2

1 Pitot Probe C16195BA

and

FIN 9DA3

1 Pitot Probe C16195BA

- (b) Install:

Refer to AMM Task 34-11-15-400-001

A318/A319/A320/A321

SERVICE BULLETIN

FIN 9DA1
1 Pitot Probe 0851HL

and

FIN 9DA2
1 Pitot Probe 0851HL

and

FIN 9DA3
1 Pitot Probe 0851HL

****CONF 003**

- (1) **Subtask 341170-831-001-002 - Replace the three pitot probes (FINs 9DA1, 9DA2 and 9DA3)**

Work Zones and Access Panels			
	Zone	Access/Work location	
	125	Access	Door 812
	126	Access	Door 822

Manpower Resources	
Manhours	2.00
Minimum number of person	2
Subtask elapsed time	1.00
Skills	AIRFRAME

Material necessary to do the job

Equipment BFEA02				
ITEM	NEW PART N°	QTY (UM)	KEYWORD	SEE NOTES
	0851HL	3	PROBE	

NOTE: The above list of components is not an AIRBUS Kit, the required parts shall be ordered as necessary through the given channel.

References	
Aircraft Maintenance Manual (AMM)	Task 34-11-15-000-001 Task 34-11-15-400-001

- (a) Remove:

Refer to AMM Task 34-11-15-000-001

FIN 9DA1
1 Pitot Probe C16195BA

and

FIN 9DA2
1 Pitot Probe C16195BA

and

FIN 9DA3
1 Pitot Probe C16195BA

(b) Install:

Refer to AMM Task 34-11-15-400-001

FIN 9DA1
1 Pitot Probe 0851HL

and

FIN 9DA2
1 Pitot Probe 0851HL

and

FIN 9DA3
1 Pitot Probe 0851HL

****CONF ALL**

D. TEST

****CONF 001**

(1) Subtask 341170-730-001-001 - Test

Manpower Resources	
Skills	NON SPECIFIC

References	
Aircraft Maintenance Manual (AMM)	Task 34-11-15-400-001

(a) Do the test procedure after the installation of the three pitot probes (FINs 9DA1, 9DA2 and 9DA3), refer to AMM Task 34-11-15-400-001.

****CONF 002**

(1) Subtask 341170-730-001-001 - Test

Manpower Resources	
Skills	NON SPECIFIC

References	
Aircraft Maintenance Manual (AMM)	Task 34-11-15-400-001

- (a) Do the test procedure after the installation of the three pitot probes (FINs 9DA1, 9DA2 and 9DA3), refer to AMM Task 34-11-15-400-001.

****CONF 003**

(1) Subtask 341170-730-001-001 - Test

Manpower Resources	
Skills	NON SPECIFIC

References	
Aircraft Maintenance Manual (AMM)	Task 34-11-15-400-001

- (a) Do the test procedure after the installation of the three pitot probes (FINs 9DA1, 9DA2 and 9DA3), refer to AMM Task 34-11-15-400-001.

****CONF ALL**

E. CLOSE-UP

****CONF 001**

(1) Subtask 341170-942-001-001 - Close-up

Manpower Resources	
Skills	NON SPECIFIC

References	
Aircraft Maintenance Manual (AMM)	Task 34-11-15-400-001

- (a) Make sure that the work areas are clean and clear of tools and other items of equipment.
- (b) Do the Close-up procedure as specified in the installation of the three pitot probes (FINs 9DA1, 9DA2 and 9DA3), refer to AMM Task 34-11-15-400-001.
- (c) Put the aircraft back to its initial configuration.

****CONF 002**

(1) Subtask 341170-942-001-001 - Close-up

Manpower Resources	
Skills	NON SPECIFIC

References	
Aircraft Maintenance Manual (AMM)	Task 34-11-15-400-001

- (a) Make sure that the work areas are clean and clear of tools and other items of equipment.

- (b) Do the Close-up procedure as specified in the installation of the three pitot probes (FINs 9DA1, 9DA2 and 9DA3), refer to AMM Task 34-11-15-400-001.
- (c) Put the aircraft back to its initial configuration.

****CONF 003**

(1) Subtask 341170-942-001-001 - Close-up

Manpower Resources	
Skills	NON SPECIFIC

References	
Aircraft Maintenance Manual (AMM)	Task 34-11-15-400-001

- (a) Make sure that the work areas are clean and clear of tools and other items of equipment.
- (b) Do the Close-up procedure as specified in the installation of the three pitot probes (FINs 9DA1, 9DA2 and 9DA3), refer to AMM Task 34-11-15-400-001.
- (c) Put the aircraft back to its initial configuration.

A318/A319/A320/A321

SERVICE BULLETIN
Appendix 01 - Elapsed Time Assumption

****CONF ALL**

- (1) For an explanation of the manhours and elapsed time, refer to the following Gantt Chart.

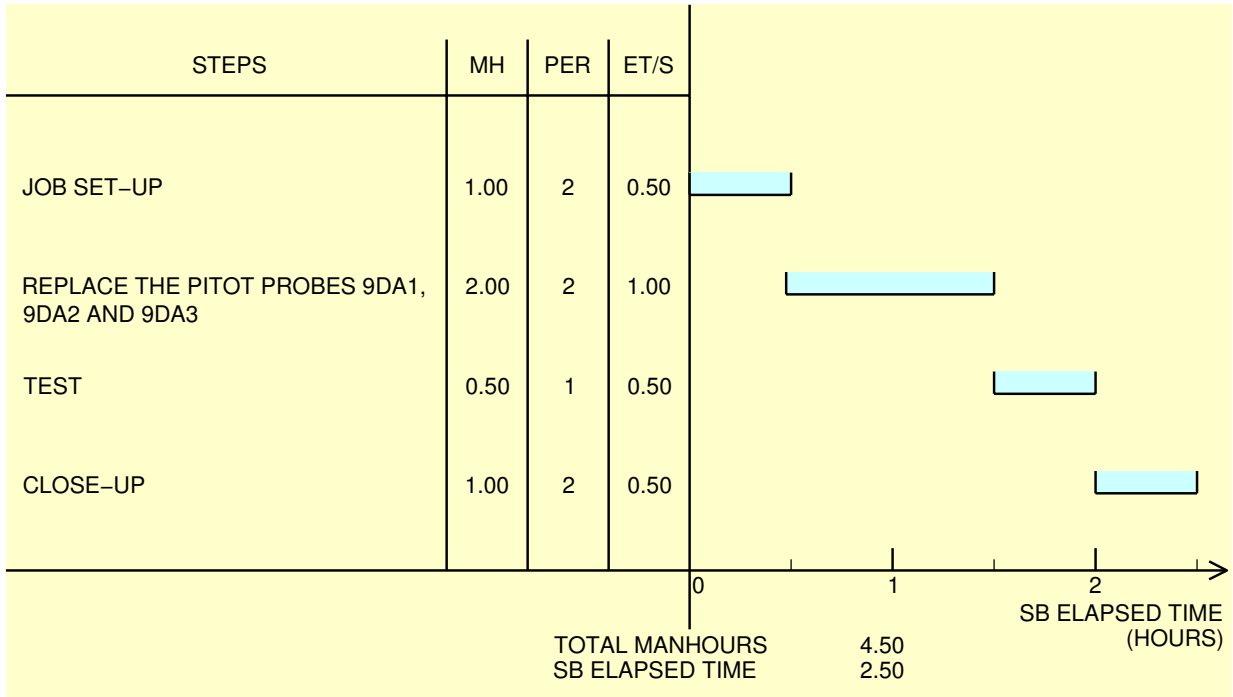
A318/A319/A320/A321

SERVICE BULLETIN Appendix 01 - Elapsed Time Assumption

****CONF ALL**

ELAPSED TIME ASSUMPTION SERVICE BULLETIN No A320-34-1170

01
02



NOTE:

01 THIS CHART IS ONLY A PROPOSAL. OPERATORS MAY DETERMINE THAT ANOTHER WAY TO DO THE WORK IS MORE SUITABLE FOR THEM.

02 IF A VSB IS INVOLVED, THE ASSOCIATED MANHOURS ARE NOT REFLECTED IN THIS GANTT CHART.

MH : MANHOURS
PER : NUMBER OF PERSONS
ET/S: ELAPSED TIME PER STEP

N_SB_341170_5_AAAA_01_01

Figure A-FAAAA - Sheet 01
Appendix 01 - Elapsed Time Assumption

A318/A319/A320/A321

SERVICE BULLETIN Appendix 02 - Retrofitted Modifications

****CONF ALL**

- (1) For the retrofitted modifications after accomplishment of this Service Bulletin, refer to Appendix 02 - Retrofitted Modifications .

A318/A319/A320/A321

SERVICE BULLETIN Appendix 02 - Retrofitted Modifications

****CONF ALL**

STATUS OF AIRCRAFT AFTER EMBODIMENT OF SERVICE BULLETIN No A320-34-1170

MODIFICATION/ PROPOSAL MODIFICATION	CONFIGURATION 001	CONFIGURATION 002	CONFIGURATION 003
25578P4366	X	X	
150799P11779			X
151182P18009			X

NOTE:

"X" IS USED FOR MODIFICATIONS EMBODIED
AFTER ACCOMPLISHMENT OF THIS SERVICE BULLETIN

N_SB_341170_5_ABAA_01_00

Figure A-FABAA - Sheet 01
Appendix 02 - Retrofitted Modifications

5 DATE: Dec 18/98

SERVICE BULLETIN No.: A320-34-1170

REVISION No.: 30 - Jun 18/15

Page: 2

TITLE: NAVIGATION - GENERAL - INSTALL GOODRICH PITOT PROBES PN 0851HL.

MODIFICATION No.: 25578P4366 150799P11779 151182P18009

Please complete the appropriate item (A or B):

A - SB WILL BE embodied YES/NO (if NO please comment)

If YES, aircraft concerned (as per SB effectivity by default) and planned dates (month/year) of embodiment:

B - SB HAS BEEN embodied on aircraft:

Operator comments:

From Airline:

Name/Title:

Signature:

Date:

If operational documentation is affected (see Paragraph 1.K of this SB): If information is needed prior to next normal revision or prior to SB embodiment, please indicate required service(s):

Either: Modification Operational Impact (MOI), if available

YES/NO

Or : Intermediate revision

YES/NO

Important Information: This SB will only be incorporated in your maintenance and operational documentation if this sheet is returned to Airbus and signed by a duly authorised representative. With the next feasible revision, this will result in

- Updating of maintenance documentation to show pre and post SB data.
- Updating of maintenance and operational documentation to show post SB data after embodiment.

If this SB requires previous or simultaneous accomplishment of other SBs, Airbus shall automatically include them in the manual revisions. Refer to SIL 00-037 for detailed information.

Please return this completed sheet to:

AIRBUS
CUSTOMER SERVICES DIRECTORATE
1 Rond Point Maurice Bellonte
31707 BLAGNAC CEDEX FRANCE

Attn: SDC32 Technical Data and Documentation Services

FAX: (+33) 5 61 93 28 06

e-mail: sb.reporting@airbus.com

or via your Resident Customer Support Office.

Alternatively, SB lists via letters or fax are also accepted.

A318/A319/A320/A321

SERVICE BULLETIN QUALITY PERCEPTION FORM

Use this form to tell us what is your perception of the quality of this Service Bulletin. The reported data that you provide us will be used to analyse areas of difficulties and to take corrective action to further improve the quality of our Service Bulletins.

We thank you for the time you have taken in completing this form.

(Please rate on a scale of 1 to 4, with 4 being the highest score)

- Quality rating of this SB	4	3	2	1
- Quality rating of the Accomplishment Instructions	4	3	2	1
- Quality rating of the Illustrations	4	3	2	1
- Is this SB easy to understand ?	Y / N			

If you have had difficulties in the accomplishment of this SB please quote below the area(s) and give a short description of the issue.

Planning	Material	Instructions
X Effectivity	X Kit content	X Preparation
X Reason	X List of Materials Operator Supplied	X Mod/Inspection
X Manpower	X Industry support	X Test
X References	X Re-identification	X Close-Up
X Publication	X Tooling	X Illustrations

Comments:

Operator:

Date:

Name/Title:

Please return this form to:

AIRBUS
CUSTOMER SERVICES DIRECTORATE
1 Rond Point Maurice Bellonte
31707 BLAGNAC CEDEX FRANCE

Attn : SEM4 Service Bulletins Management
FAX : (33) 5 61 93 42 51

Or via your Resident Customer Support Office.